

THE ORIGINAL
MORRIS & C^o

FOUNDED BY WILLIAM MORRIS IN 1861

BEDFORD PARK





Bedford Park

Over the years, Bedford Park has found itself at the beating heart of change.

At the forefront of the Garden Suburb Movement in the 1870s, it was also a mere stone's throw from where Victorian arts pioneer William Morris was masterminding a tremendous shift in design. Later, the area became the home and site of early work to disciple of Morris, architect and artist, C.F.A. Voysey, and the setting for Morris's contemporaries, whose work would move the dial of design, ever forward. From Charles Francis Annesley Voysey (1857-1941) whose lasting architectural legacy includes the renowned Voysey House, and the nature-inspired textile design of Tulip & Bird (1895), to J.H. Dearle (1859-1932) the artist behind the iconic Leicester (1912), once Art Director of Morris & Co., and Allan Francis Vigers (1858-1921), a contemporary of Morris, whose Campanula (1900), has been vibrantly recoloured for this collection, these designers define Bedford Park's character.

In style, Bedford Park squares up to the punchy spirit of those who created its patterns. Combining the whimsical with the untamed, in shades of punk and flower power, this is a colour-rich Morris & Co. as you've never seen it before. Patterns and motifs leap free from their two-dimensional confines, filling homes with a dancer's delight and dark charm.

Paying homage to over 160 years of design history, rediscover the radical potential of design with Bedford Park's 15 wallpapers and 14 fabrics.

ALL WALLPAPERS HAVE BEEN DESIGNED AND
MANUFACTURED IN THE UNITED KINGDOM

morrisandco.sandersondesigngroup.com @wmorrisandco

THE ORIGINAL
MORRIS & C^o

FOUNDED BY WILLIAM MORRIS IN 1861

BEDFORD PARK

The Bedford Park collection brings together an inner circle of towering creative talents, heroes of British design that all at times gathered around this famed area of London. William Morris, the leading light of the Arts & Crafts movement, C.F.A. Voysey, Allan Francis Vigers and J.H. Dearle set the visual scene, creating all a manner of striking designs, dedicated to the principles of the craft and promoting artistry and one's connection to nature with every stroke of a brush and pencil marking.

A Timeline of Design

William Morris

1834 - 1896



SPRING THICKET 1894

WILLIAM MORRIS DESIGNS

Daisy, 1864
Fruit, 1864
Pimpernel, 1876
Strawberry Thief, 1883
Spring Thicket, 1894

C.F.A Voysey

1857 - 1941



TULIP & BIRD 1895

C.F.A VOYSEY DESIGNS

Laceflower, 1890
Tulip & Bird, 1895
The Savaric, 1897
Glade, 1897

Allan Francis Vigers

1858 - 1923



CAMPANULA 1900

ALLAN FRANCIS VIGERS DESIGNS

Campanula, 1900
Monkshood, 1901
Yew & Ail, 1901

J.H. Dearle

1859 - 1932



LEICESTER 1912

J.H DEARLE DESIGNS

Golden Lily, 1899
Hyacinth, 1900 - 1912
Leicester, 1912

ALL WALLPAPERS HAVE BEEN DESIGNED AND MANUFACTURED IN THE UNITED KINGDOM



Campanula



Campanula's gloriously flat design, a densely populated frame of vibrant flowers, is given another layer of intensity with a supercharged palette. Alan Francis Vigers produced Campanula in 1900 and had it printed at Jeffrey & Co. wallpaper printers, a manufacturer widely regarded as respectful of the crafting technique. We've surflex printed Campanula, offering a contrast in depth between the flat surface and three dimensionality of the design, paying homage to the wooden printing blocks used widely in the days of William Morris.



Glade



Glade is a botanist's delight, with delicately stylised florals arranged in a harmonious assemblage. Keen eyes will see more than a hint of William Morris's first-ever wallpaper design, Daisy, in Glade. Demonstrating the close relationship and creative dialogue between the two great designers, Glade's simple, wholesome form exemplifies their shared ethic: there is beauty in natural simplicity.

BEDFORD PARK COLLECTION

Laceflower



In around 1895, C.F.A. Voysey first gave us Laceflower. Swaying in an imagined wind, Voysey's characteristic birds chirp among the stems and flowerheads. The gentle movement in the pattern is emphasised by simple, saturated colour stories, with Tobacco & Pistachio offering a sophisticated, retro feeling directly taken from the original document we hold in our archive.

BEDFORD PARK COLLECTION





Leicester



Apart from Morris himself, there is no greater author of the large-scale and rhythmically swirling patterns than his apprentice, J.H. Dearle, creator of the adapted Leicester. Dearle's 1912 design retains all of its ecstatic movement, with the folding acanthus leaves and miniature, jewel-like flowerheads readily soaking up great depths of colour.



Monkshood



Beware, Alan Francis Vigers's upbeat, jolly 1901 design has a somewhat darker undertone to its charming visual demeanour. So named because its head resembles the rounded shape of a monk's habit, this plant is also referred to as wolfsbane, recalling its use as a toxic poison used to coat arrows fired at marauding wolves in Classical times. This plant, as venomous as it is beautiful, is charmingly rendered by Vigers with innocuous innocence.

Pimpernel



Psychedelia meets a signature Morris & Co. botanical, evoking the brand's trippy colour experiments from the swinging '60s. Ensnaring and intoxicating, the swirling rhythm and hidden depths of William Morris's 1876 Pimpernel have an irresistibly mythic pull. All tendrils and flowerheads, Pimpernel is a perfect example of Morris's layering technique, adding texture and drama at every twist and turn.

BEDFORD PARK COLLECTION



The Savaric



C.F.A. Voysey, one of the foremost Arts & Crafts designers and architects of his generation, blends his architectural and decorative training in this, The Savaric. Featuring flocks of birds gracing branches below the high canopy of trees, The Savaric, originally from 1896, bears the unmistakable signature bird motif indicative of Voysey's style. In Garden Green and Cirrus, we've retained the authentic Arts & Crafts colour stories.

BEDFORD PARK COLLECTION





Spring Thicket



William Morris's last-ever pattern made for wallpaper is a mysterious, brooding design from 1894. We've highlighted the beguiling foliage folds and tulip heads, lending the impression the flowers might lurch free of the paper's surface. Choose the Fruit Punch colourway for a palette directly taken from the original design document stored in our archive.

Yew & Aril



A simple, two-toned design of infinite possibilities, Yew & Aril is a seamless choice as a coordinate fabric. A wonderful colour carrier, Yew & Aril's small-scale design by Alan Francis Vigers describes the quiet beauty of the branches of a Yew tree and its charming berries, known as arils.

BEDFORD PARK COLLECTION



CAMPANULA

Campanula’s gloriously flat design, a densely populated frame of vibrant flowers, is given another layer of intensity with a supercharged palette. Alan Francis Vigers produced Campanula in 1900 and had it printed at Jeffrey & Co. wallpaper printers, a manufacturer widely regarded as respectful of the crafting technique.

WALLPAPER



217350



217351



217352



217353

FABRIC



227222



227223



227224

MONKSHOOD

Beware, Alan Francis Vigers’s upbeat, jolly 1901 design has a somewhat darker undertone to its charming visual demeanour. So named because its head resembles the rounded shape of a monk’s habit, this plant is also referred to as wolfsbane, recalling its use as a toxic poison used to coat arrows fired at marauding wolves in Classical times.

WALLPAPER



217343



217344



217345

FABRIC



227219



227220



227221

YEW & ARIL

A simple, two-toned design of infinite possibilities, Yew & Aril is a seamless choice as a coordinate fabric. A wonderful colour carrier, Yew & Aril’s small-scale design by Alan Francis Vigers describes the quiet beauty of the branches of a Yew tree and its charming berries, known as arils.

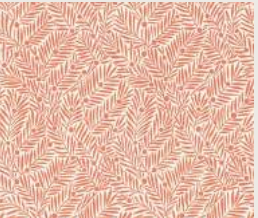
WALLPAPER



217346



217347



217348



217349

FABRIC



227225



227226



227227

LACEFLOWER

In around 1895, C.F.A. Voysey first gave us Laceflower. Swaying in an imagined wind, Voysey’s characteristic birds chirp among the stems and flowerheads.

WALLPAPER



217354



217355

FABRIC



227228



227229

TULIP & BIRD

The Tulip & Bird pattern, whose form bears all the fresh simplicity of a classic Voysey, here undertakes a total colour transformation. This intriguing pattern now features deep, gem-like tones, reminiscent of the ceramic work of which C.F.A. Voysey was also a noted designer.

WALLPAPER



510016

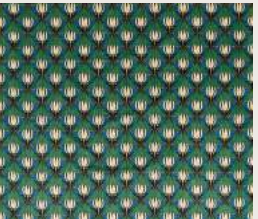


510017



510030

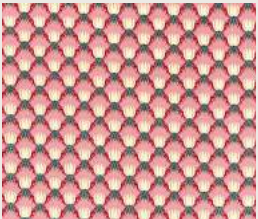
FABRIC



520013



520014



520020

THE SAVARIC

C.F.A. Voysey, one of the foremost Arts & Crafts designers and architects of his generation, blends his architectural and decorative training in this, The Savaric. Featuring flocks of birds gracing branches below the high canopy of trees, The Savaric, originally from 1896, bears the unmistakable signature bird motif indicative of Voysey's style.

WALLPAPER



217339

FABRIC



227217



227218

GLADE

Glade is a botanist's delight, with delicately stylised florals arranged in a harmonious assemblage. Keen eyes will see more than a hint of William Morris's first-ever wallpaper design, Daisy, in Glade.

WALLPAPER



217341



217342

GOLDEN LILY

In these punchy, updated colourways, we've certainly stayed true to that original direction. For the Bedford Park collection, we've added a trippy undercurrent of sugared hues, ranging from Secret Garden's sherbet hues to the primary colour rollercoaster that is Twister.

WALLPAPER



217330



510006



510007



510014



510015

FABRIC



520003



520004

HYACINTH

J.H. Dearle's 1911 pattern is given an unmistakable carnivalesque colour change. Crimson reds and cosmic pinks frame the curious Hyacinth pattern, noted for its profusion of flowerheads connected by arcing tendrils.

WALLPAPER



510008



510009

FABRIC



520005

LEICESTER

Apart from Morris himself, there is no greater author of the large-scale and rhythmically swirling patterns than his apprentice, J.H. Dearle, creator of the adapted Leicester. Dearle's 1912 design retains all of its ecstatic movement, with the folding acanthus leaves and miniature, jewel-like flowerheads readily soaking up great depths of colour.

WALLPAPER



217334



217335

FABRIC



227209



227210



227211

DAISY

Strawberry Fields forever. A pick n’ mix of lively, sugared colours arranged in bouquets of different florals. Originally created by William Morris in 1864, and one of the first wallpaper designs he ever made, its unique form was inspired by medieval floral miniatures Morris found in the British Museum.

WALLPAPER



510005



510020



510034

FABRIC



520009

FRUIT

Tempting pomegranates or zesty lemons, whatever your perception, you’re looking at one of the first wallpapers William Morris ever made. Reimagined in three colour stories, from popping pinks to serene blues and verdant greens, this is one fruit that never over-ripens.

WALLPAPER



510010



510018



510019

FABRIC



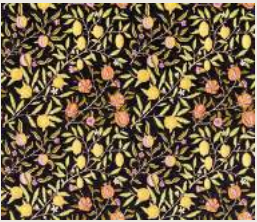
227205



520006



520007



520015

PIMPERNEL

Psychedelia meets a signature Morris & Co. botanical, evoking the brand’s trippy colour experiments from the swinging ‘60s. Ensnaring and intoxicating, the swirling rhythm and hidden depths of William Morris’s 1876 Pimpernel have an irresistibly mythic pull.

WALLPAPER

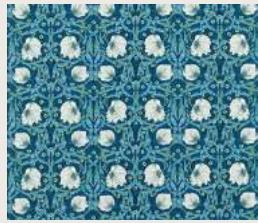


217332

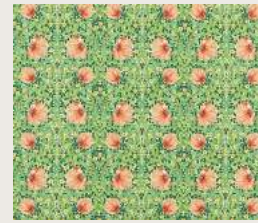


217333

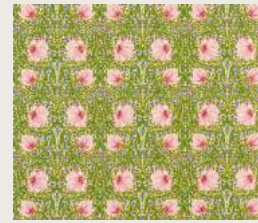
FABRIC



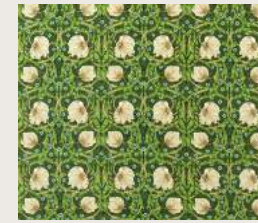
227212



227213



227214



227215



227216

STRAWBERRY THIEF

William Morris’s 1883 light-fingered classic, Strawberry Thief, makes off with our hearts in this pair of adventurously contrasting colourways. If whisky is your poison, Old Fashioned is the one for you, with the striking Arts & Crafts pattern emerging riotously from a dark ground.

WALLPAPER

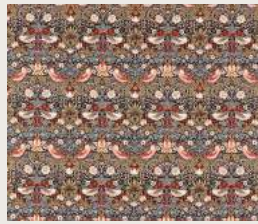


510021



510022

FABRIC



520016



520017

SPRING THICKET

William Morris’s last-ever pattern made for wallpaper is a mysterious, brooding design from 1894. We’ve highlighted the beguiling foliage folds and tulip heads, lending the impression the flowers might lurch free of the paper’s surface.

WALLPAPER



217336



217337



217338

FABRIC



227206



227207



227208



Contact Details

LONDON SHOWROOM

Design Centre Chelsea Harbour, First Floor,
South Dome, Lots Road, London, SW10 0XE

Tel: + 44 203 903 3700

Email: showroom@sandersondesigngroup.com

NEW YORK SHOWROOM

D&D Building, 979 3rd Avenue,
Suite 409, New York, NY 10022

Tel +1 212 319 7220

sales-ny@sandersondesigngroup.com

CHICAGO SHOWROOM

222 W Merchandise Mart Plaza,
Suite 6-117A, Chicago, IL 60654

Tel +1 312 929 2058

sales-chicago@sandersondesigngroup.com

PARIS SHOWROOM

19 Rue Du Mail 75002 Paris, France

Tel: +44 (0)203 093 1840

NETHERLANDS SHOWROOM

ETC Licht & Interieur, Randweg 20,

4104 AC Culemborg

Tel: +31 65349 3696

Email: international@sandersondesigngroup.com

GERMANY SHOWROOM

Kronenstrasse 4, 76133 Karlsruhe

Tel: +49 721 981 985 60

Email: verkauf@sandersondesigngroup.com

morrisandco.sandersondesigngroup.com

@wmorrisandco