

STYLE  
GUIDE

THIBAUT  
TAPES & TRIMS



LET STYLE BE  
**YOUR GUIDE**

Tapes & Trims are the ultimate accessory to complete your Thibaut design story. **Let your creativity shine and dazzle clients** with trimmings that adorn pillows, window treatments, and furniture in fresh ways.

There's so much to love **in stock and ready to ship.**

From sweet scallops and graphic geometrics to hand-embroidered motifs and micro-cords, all pairing effortlessly with our exclusive color palettes.

The design studio has curated application tips and inspirational examples in one go-to style guide.



**We can't wait to see what you create!** Share your design projects with us by using #MyThibaut for a chance to be featured on our channels.

**PERLA TAPE**

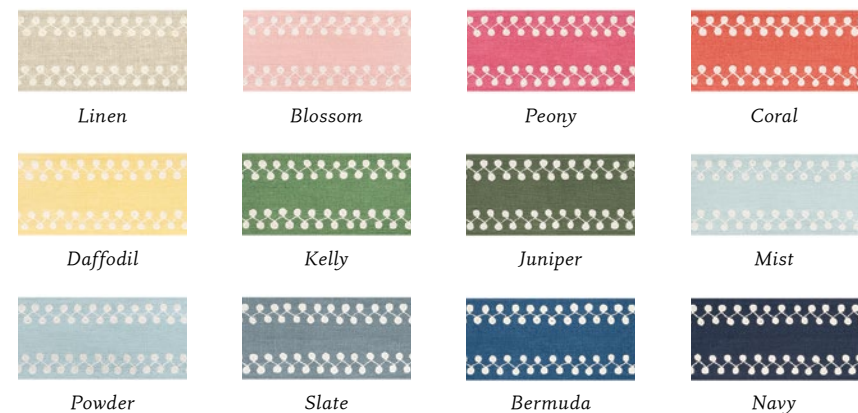
Perla is a 3<sup>3</sup>/<sub>8</sub>" wide, symmetrical linen tape. Bringing a solid hit of color and a dash of fun, stitched cords swirl and dance along the edges.



Add some punch to a plain roman shade. Apply Perla Tape and create your own unique awning stripe.

**TIP**

Want a skirt that turns heads? Try adding Perla Tape on the bottom edge of your ottoman. To complete the look, use Keaton Cord instead of a welt!

















# FRET APPLIQUÉ

A timeless quatrefoil design with decorative stitched edges that yields substantial impact while revealing the fabric below. At 3½" wide, Fret Appliqué accentuates any solid or printed fabric.



**TIP**

Add pizzazz to your favorite chair or ottoman. Apply Fret Appliqué down the center for the perfect pop!

- |   |   |
|---|---|
|    |    |
| Linen   | Snow White  |
|    |    |
| Blossom   | Coral   |
|  |  |
| Burmuda   | Powder  |
|  |  |
| Sky   | Navy  |
|  |  |
| Ivory   | Kelly   |
|  |  |
| Juniper   | Daffodil  |



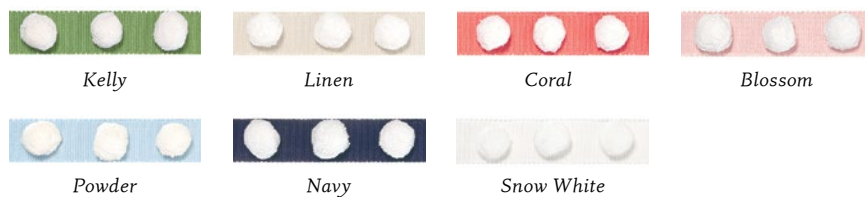
Don't be afraid to pair an appliqué on a lively print. Our tape colors live in creative unison with all Thibaut fabrics.





## POM POM TAPE

Inspire a lively state of play with the whimsical Pom Pom Tape. 1 1/4" wide and available in seven cheerful colors, this new style brings volume and delight with dense cotton pom poms atop a ribbed woven tape.



## PIPPA TAPE

A fan favorite, Pippa is making a splash for its abundance of charm and versatility. This cheerful, laser-cut felt tape has white stitching along its scalloped edge border and is available in 11 colors. Lightweight and 1 1/4" wide, Pippa is the perfect style to create motifs or apply as edging for drapes, lampshades, and pillows.



**TIP**

Double the trim, double the impact! Separate two Pippa tapes with Prisma fabric, creating a layered border on the edge of plain or patterned drapes.





# DASH TAPE

Meet the ultimate go-to tape, 1" wide and embroidered with graphic lines in many color combinations and ground options. Thanks to its timeless design and small scale, Dash Tape is a versatile accent for application and pattern making.



Overlap and layer to create unique patterns that dress up drapes, roman shades or upholstery.



Apply Dash Tape to an upholstered wall or on top of wallpaper.

- |                |                  |                   |                    |
|----------------|------------------|-------------------|--------------------|
|                |                  |                   |                    |
| White on Lilac | White on Peony   | White on Sunshine | White on Mandarin  |
|                |                  |                   |                    |
| White on Berry | White on Mist    | White on Spring   | White on Kelly     |
|                |                  |                   |                    |
| White on Ocean | White on Bermuda | White on Navy     | White on Onyx      |
|                |                  |                   |                    |
| White on Linen | Navy on White    | Kelly on White    | Chocolate on Linen |





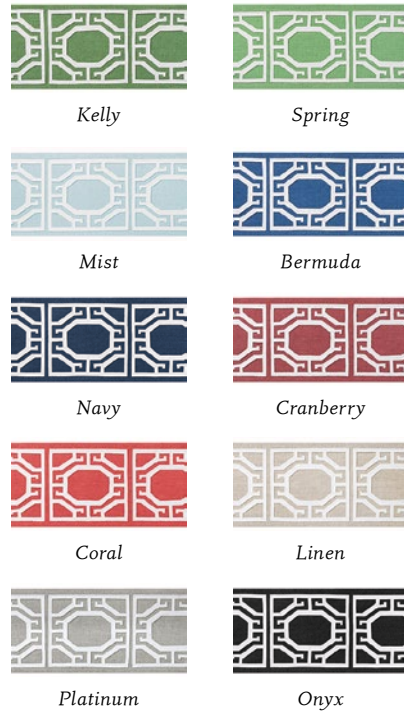
# GATE APPLIQUÉ TAPE

Gate Appliqué opens the door to bold style. This 4" wide linen tape has been dyed to our signature color palette. The appliqué, white felt fabric, is laser-cut into a captivating trellis box pattern for a graphic repeat.



**TIP**

Gate Appliqué Tape takes a plain fabric from drab to fab. It works best when sewn on the lead edge of drapes or down the center of pillow.



# LENOX TAPE

Lenox is a stylized leaf design printed on a linen fabric base and sewn at the edges. This 2" tape is terrific for framing out cushions on sofas and chairs, or as banding on pillows.





# KATONAH TAPE

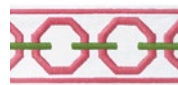
Katonah's octagon motif is a classic geometric bordered with a sleek, finished edge. This two-color tape is 3" wide and comes in various ground and color combinations, making it a designer favorite.



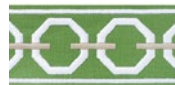
Add some extra oomph when you apply Katonah to the bottom edge of a chair, sofa or ottoman skirt.

**TIP**

Dare to be different! We applied Katonah horizontally across the width of this drapery panel to accent the two different fabric colors. It's sure to impress every time!



*Peony and Grass*



*Spring and Linen*



*Grass and Bermuda*



*Navy and Sky*



*Sky and Bermuda*



*Mist and Linen*



*Linen and Nickel*



*Onyx and Nickel*

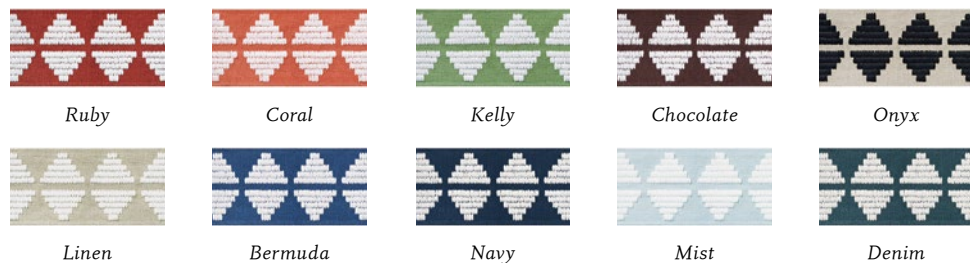






## KING'S POINT TAPE

Terrific and textured, King's Point adds dimension with its embroidered, abstract mountain range. This tape is 3¼" wide and offered in a full array of colors, including earth tones.



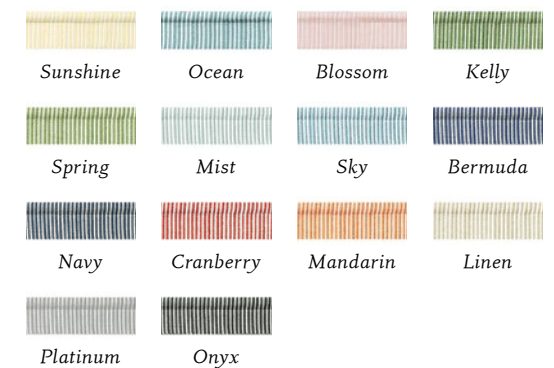
## KEATON CORD

Intended to be used as a welt cord for upholstery or pillows, this micro-cord is covered in a two-color pinstripe, defining timeless style.



**TIP**

Elevate everything with texture. Multiply the impact and apply two Keaton Cords to accentuate a wide tape like our Hartney shown. This triple threat creates a stunning boxed pillow with an artisanal look.







PILE 'EM  
HIGH

# PILLOWS

ARE OUR SOFT SPOT



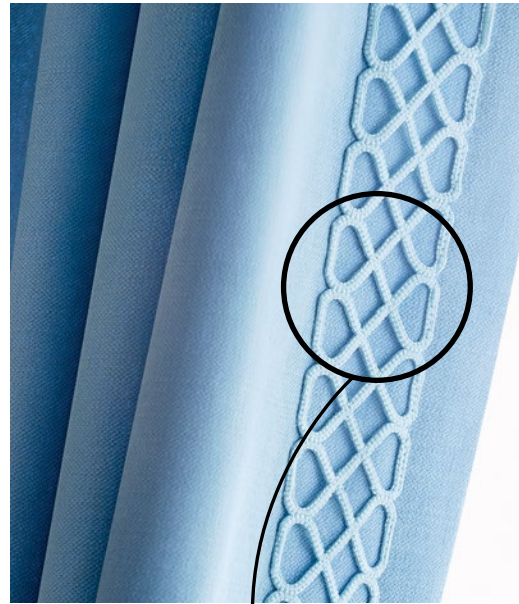
Pleasuring pillows in more ways than one

- 1 Customize a boxed pillow with contrast tape.
- 2 Go soft with a pleated tape on the edging.
- 3 Create a focal point down the center.  
*Get creative and make it your own!*



# RIPLEY APPLIQUÉ

Ripley Appliqué is an open, lace-like trim that is made by embroidering over a cord and sewn into a frette. The peak-a-boo effect will show through this 2½" trim, adding dimension, texture, and visual interest.



**TIP**

Sew along the edge with thread that matches the tape, and leave the center loose. No need for special workroom treatments.

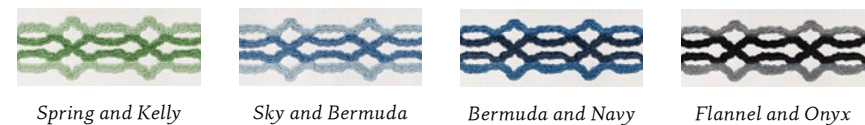


Can be added down the middle of upholstery or pillows.



# HARTNEY TAPE

Inspired by fashionable knitwear, Hartney is a geometric lattice created with plush chenille yarns. This 2¾" tape will instantly add dimension to any fabric and is offered in tonal shades of blues, green, and black.







## PLEATED TAPE

There is no fabric embellishment more timeless than pleats. This 100% cotton tape is woven, dyed, pleated, and stitched in place. A go-to staple available in 15 colorways and just shy of 1" wide.



**TIP**

Using a patterned fabric with multiple colors? Bring out an accent color with pleated tape. This finishing touch can be applied to pillows as edging, as a motif, or sewn to the base of an upholstered chair skirt.

		
<i>Kelly</i>	<i>Spring</i>	<i>Mist</i>
		
<i>Bermuda</i>	<i>Navy</i>	<i>Cranberry</i>
		
<i>Coral</i>	<i>Linen</i>	<i>Platinum</i>
		
<i>Onyx</i>	<i>Snow White</i>	<i>Sunshine</i>
		
<i>Sky</i>	<i>Peony</i>	<i>Blossom</i>





# COBBLE HILL TAPE

Cobble Hill is a 2" wide flat tape embroidered with an interlaced design. A whimsical approach to a statement band.



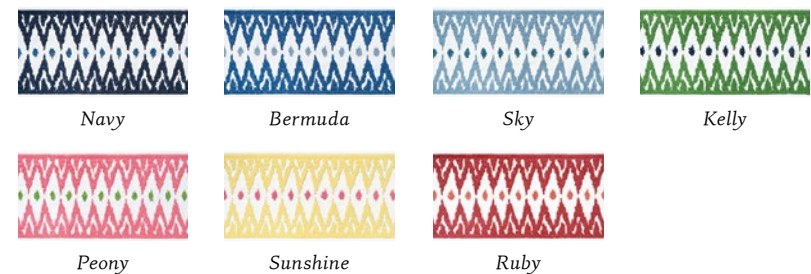
**TIP**

A simple table skirt can go from straightforward to showstopper with a mix of modern fabrics and a bordering flat tape.



# DELMONT TAPE

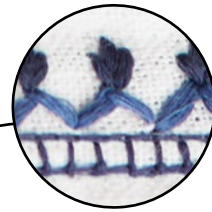
Dazzle with this embroidered two-color Ikat Tape that packs four inches of punch with its playful pattern in vibrant colorways. A go-to for making that white roman shade pop or embellishing a chair cushion with a fun new look.





# BRIGETTE TAPE

Infuse an elevated bohemian style with Brigitte Tape, the smaller coordinate of Norway Tape. Marvel at the details of hand-embroidered floral motifs, inspired by an antique document.



*It's all in the details. Border a fabric-covered lampshade with a complimentary tape.*



Peony



Navy



Ocean



Kelly

**TIP**

Brigitte (1") and Norway (2 $\frac{3}{8}$ ") were designed to pair together. Use their size difference to create unique patterns with effortless layers.



Two is better than one! This pillow features two fabrics with two tapes, outlining each color with a stylish border.



# NORWAY TAPE

Norway is the larger companion to Brigitte Tape. It is exquisitely crafted with artisanal hand embroidery, including French knots. The cotton ground tape has been lined with an extra layer on the back to protect the embroidered yarn.



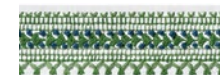
Peony



Navy



Ocean



Kelly





## AVENUE TAPE

This graphically pleasing tape makes an elegant statement. Avenue features a multi-colored Greek key motif that is embroidered on a 3 7/8" wide tape.



*Kelly and Bermuda*



*Bermuda and Sky*



*Linen and Stone*



*Linen and Platinum*



*Mist and Sunshine*



*Sunshine and Sky*



GIVE YOUR DESIGNS A  
**NEW SPIN**  
 WITH THIBAUT TAPES & TRIMS



# THIBAUT

[thibautdesign.com](http://thibautdesign.com)

