



OSBORNE & LITTLE
MARKETING
BRIEF
SPRING
2024



INTRODUCING THE NEW
SPRING 2024
COLLECTIONS

CONTENTS

OSBORNE & LITTLE

BYZANCE FABRICS	02
BYZANCE WALLPAPERS	12
NATURAL WALLCOVERINGS.....	22
BYZANCE TRIMMINGS.....	23
LANSDOWNE.....	31
ALFRESCO OUTDOOR / INDOOR FABRICS	38
CUMBRIA STAIN-RESISTANT.....	45
FONTHILL STAIN-RESISTANT	49
TECHNICAL SPECIFICATION	53
INSPIRATION	56

UK SHOWROOM Osborne & Little Design Centre Chelsea Harbour
First Floor Centre Dome London SW10 0XE Tel +44 (0)20 8812 3123

UK HEAD OFFICE Osborne & Little Riverside House 26 Osiers Road London SW18 1NH Tel +44 (0)20 8812 3000
France Tél 01 55 69 81 06 Germany Tel 069 50 98 51 71 Italy Tel 02 69633805 Spain Tel 91 275 78 12 USA Tel 203 359 1500
oandl@osborneandlittle.com osborneandlittle.com

BYZANCE FABRICS

Printed and embroidered fabrics draw inspiration from the decorative cultural arts. Each fabric tells a distinctive story, from ornate patterns reminiscent of Indian artistry to playful motifs capturing the essence of nature. **BYZANCE** reflects beauty and individuality, presenting multiple options for interior design.

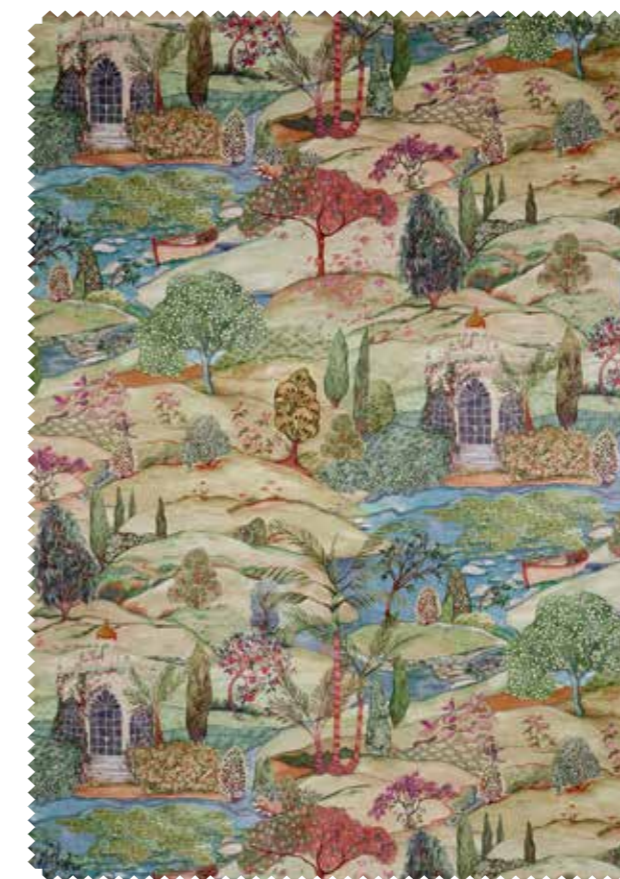
Companion designs are presented in **BYZANCE WALLPAPERS**.

BYZANCE FABRICS



LODHI VELVET – an orangery nestled among ornate trees along a meandering river, delicately painted in a manner reminiscent of Indian miniature paintings. The garden landscape transitions from summer to autumn, with laden branches and falling leaves. Printed on luxurious cotton/viscose velvet. Named after *Lodhi Gardens*, situated in Delhi, India.

Pattern No.	F7890-01,02	End Use	
Pattern	Lodhi Velvet	UK Flamm. Code	C + M
Width cm (ins)	140 (55)	Martindale	30,000
Repeat cm (ins)	116 (45½)	Grade	GC
Content	49% CO; 46% VI; 5% PL	Wing Rip Warp Weft	39N 61N
Care Symbols		Weight GSM	520
Care Code	8	Country of Origin	Italy



LODHI VELVET F7890-01



F7890-02

BYZANCE FABRICS



MAYANI – beautiful decorative birds are intricately painted, perch on leafy trailing branches. Printed on linen. The *Mayani Bird Sanctuary* is a famous bird sanctuary in India.

Pattern No.	F7891-01,02,03	End Use	
Pattern	Mayani	UK Flamm. Code	N/A
Width cm (ins)	140 (55)	Martindale	N/A
Repeat cm (ins)	74 (29) Half-drop	Grade	N/A
Content	100% LI	Wing Rip Warp Weft	N/A
Care Symbols		Weight GSM	238
Care Code	3	Country of Origin	Italy



MAYANI F7891-01



F7891-02



F7891-03

BYZANCE FABRICS



FORESTA – a charming depiction of stylised Indian trees. The colourways encompass various shades of green with golden accents, capturing a natural ambience. Printed on linen.

Pattern No.	F7892-01,02	End Use	
Pattern	Foresta	UK Flamm. Code	C + M
Width cm (ins)	140 (55)	Martindale	16,000
Repeat cm (ins)	56 (22) Half-drop	Grade	LD
Content	100% LI	Wing Rip Warp Weft	57N 64N
Care Symbols		Weight GSM	240
Care Code	3	Country of Origin	Italy



FORESTA F7892-01



F7892-02

BYZANCE FABRICS



SAMODE – a design of intricately patterned and colourful paisley florals, embroidered on linen. Named after the *Samode Palace* in Rajasthan, India.

Pattern No.	F7893-01,02,03	End Use	
Pattern	Samode	UK Flamm. Code	N/A
Width cm (ins)	129 (50¾)	Martindale	N/A
Repeat cm (ins)	78 (30¾)	Grade	N/A
Content	58% LI; 36% VI; 6% PL	Wing Rip Warp Weft	N/A
Care Symbols		Weight GSM	386
Care Code	8	Country of Origin	India



SAMODE F7893-01



F7893-02



F7893-03

BYZANCE FABRICS



TANISKA – a contemporary tree-of-life design with paisley flowers within a lattice border stripe, printed on linen. *Taniska* is a Hindu name, meaning Goddess of Gold.

Pattern No.	F7894-01 to 04	End Use	
Pattern	Taniska	UK Flamm. Code	N/A
Width cm (ins)	140 (55)	Martindale	N/A
Repeat cm (ins)	85 (33½) Quarter-drop	Grade	N/A
Content	100% LI	Wing Rip Warp Weft	N/A
Care Symbols		Weight GSM	238
Care Code	3	Country of Origin	Italy



TANISKA F7894-01



F7894-02



F7894-03



F7894-04

BYZANCE FABRICS



SAMRINA – a beautiful Susani inspired decorative stripe embroidery reminiscent of an heirloom wall hanging, embroidered on a linen ground. Samrina meaning flower or a fruit, is of Arabic origin.

Pattern No.	F7895-01,02	End Use	
Pattern	Samrina	UK Flamm. Code	N/A
Width cm (ins)	129 (50¾)	Martindale	N/A
Repeat cm (ins)	37 (14½)	Grade	N/A
Content	43% V; 23% L; 19% PL; 15% CO	Wing Rip Warp Weft	N/A
Care Symbols		Weight GSM	535
Care Code	8	Country of Origin	India



SAMRINA F7895-01



F7895-02

BYZANCE FABRICS



SHALIMAR – a handsome design of trailing coconut palms intertwined with leaves, printed on a dual-purpose linen/cotton ground. *Shalimar* refers to historic royal gardens of the Mughal Empire in South Asia.

Pattern No.	F7896-01,02,03	End Use	
Pattern	Shalimar	UK Flamm. Code	C + M
Width cm (ins)	140 (55)	Martindale	25,000
Repeat cm (ins)	60 (23) Half-drop	Grade	GD
Content	52% L; 48% CO	Wing Rip Warp Weft	137N 202N
Care Symbols		Weight GSM	397
Care Code	5	Country of Origin	UK



SHALIMAR F7896-01



F7896-02



F7896-03

BYZANCE FABRICS



CHELLAH – inspired by Indian Mughal style, a floral trail of tiger lilies and exotic flowers weaves around a central meandering stem. Printed on linen. Named after the *Chellah Gardens* located in Rabat, Morocco.

Pattern No.	F7897-01	F7897-02	End Use		
Pattern	Chellah	Chellah	UK Flamm. Code	C + M	C + M
Width cm (ins)	140 (55)	140 (55)	Martindale	8,000	16,000
Repeat cm (ins)	118 (46)	118 (46)	Grade	N/A	LD
Content	100% LI	100% LI	Wing Rip Warp Weft	51N 40N	57N 64N
Care Symbols			Weight GSM	240	240
Care Code	3	3	Country of Origin	Italy	Italy



CHELLAH F7897-01



F7897-02

BYZANCE FABRICS



LAMBANI – a rich and opulent embroidery of exotic plants on multi-coloured stripes of complementary shades, embroidered on linen. Named after *Lambani* embroidery, an intricate form of textile embellishment.

Pattern No.	F7898-01	End Use	
Pattern	Lambani	UK Flamm. Code	N/A
Width cm (ins)	126 (49½)	Martindale	N/A
Repeat cm (ins)	77 (30¾)	Grade	N/A
Content	58% LI; 42% PL	Wing Rip Warp Weft	N/A
Care Symbols		Weight GSM	500
Care Code	8	Country of Origin	India



LAMBANI F7898-01

BYZANCE WALLPAPERS

A collection of wallpapers draws inspiration from the decorative cultural arts. Each design tells a distinctive story, from ornate patterns reminiscent of Indian artistry to playful motifs capturing the essence of nature. In addition, the collection offers an elegant metallic foil wallpaper. **BYZANCE WALLPAPERS** reflects beauty and individuality, presenting multiple options for interior design.

Companion printed and embroidered fabrics are presented in **BYZANCE**.

BYZANCE WALLPAPERS



LODHI – an orangery nestled among ornate trees along a meandering river, delicately painted in a manner reminiscent of Indian miniature paintings. The garden landscape transitions from summer to autumn, with laden branches and falling leaves. Named after *Lodhi Gardens*, situated in Delhi, India.

Pattern No.	W7900-01,02,		
Pattern	Lodhi		
Description	Non-woven		
Repeat cm (ins)	120 (47¼) Half drop		
Roll Size	9m x 70cm (10yds x 27½) 6.3m ² (7½yd ²)		
Care Instruction			
FR Rating UK	EN15102/EN13501 B S1,d0	FR Rating USA	ASTM E-84 Class A (NFPA 255)
Country of Origin	UK		



LODHI W7900-01



W7900-02

BYZANCE WALLPAPERS



SHALIMAR – a handsome design of trailing coconut palms intertwined with leaves, printed on a linen textured ground. A metallic crackle texture creates an exuberant background for the gold colourway. *Shalimar* refers to historic royal gardens of the Mughal Empire in South Asia

Pattern No.	W7903-01,02,03		
Pattern	Shalimar		
Description	Non-woven		
Repeat cm (ins)	70 (27½) Half drop		
Roll Size	9m x 52cm (10yds x 20½) 4.68m ² (5¾yd ²)		
Care Instruction			
FR Rating UK	EN15102/EN13501 B S1,d0	FR Rating USA	ASTM E-84 Class A (NFPA 255)
Country of Origin	UK		



SHALIMAR W7903-01



W7903-02



W7903-03

BYZANCE WALLPAPERS



SAMRINA – a beautiful Susani inspired decorative stripe, embellished with metallic accents, captures the essence of hand-block printing. *Samrina* meaning flower or a fruit, is of Arabic origin.

Pattern No.	W7904-01 to 04		
Pattern	Samrina		
Description	Non-woven		
Repeat cm (ins)	42 (16½) Half drop		
Roll Size	10m x 52cm (10yds x 20½) 4.68m ² (5¾yd ²)		
Care Instruction			
FR Rating UK	EN15102/EN13501 B S1,d0	FR Rating USA	ASTM E-84 Class A (NFPA 255)
Country of Origin	UK		



SAMRINA W7904-01



W7904-02



W7904-03



W7904-04

BYZANCE WALLPAPERS



SAMODE – a design of intricately patterned and colourful paisley florals on a printed textured ground. Named after the *Samode Palace* in Rajasthan, India.

Pattern No.	W7905-01,02		
Pattern	Samode		
Description	Non-woven		
Repeat cm (ins)	64 (25¼) Half drop		
Roll Size	9m x 52cm (10yds x 20½) 4.68m ² (5¾yd ²)		
Care Instruction			
FR Rating UK	EN15102/EN13501 B S1,d0	FR Rating USA	ASTM E-84 Class A (NFPA 255)
Country of Origin	UK		



SAMODE W7905-01



W7905-02

BYZANCE WALLPAPERS



TANISKA – contemporary tree-of-life designs with paisley flowers, presented within picture frames adorned with gold inlay, all within a lattice border stripe. *Taniska* is a Hindu name, meaning Goddess of Gold.

Pattern No.	W7906-01 to 04		
Pattern	Taniska		
Description	Non-woven		
Repeat cm (ins)	97 (38¼) Half drop		
Roll Size	9m x 52cm (10yds x 20½) 4.68m ² (5¾yd ²)		
Care Instruction			
FR Rating UK	EN15102/EN13501 B S1,d0	FR Rating USA	ASTM E-84 Class A (NFPA 255)
Country of Origin	UK		



TANISKA W7906-01



W7906-02



W7906-03



W7906-04

BYZANCE WALLPAPERS



CHELLAH – inspired by Indian Mughal style, a floral trail of tiger lilies and exotic flowers weaves around a central meandering stem. A gold and a silver colourway are printed on a crackle texture. Named after the *Chellah Gardens* in Rabat, Morocco.

Pattern No.	W7907-01 to 04		
Pattern	Chellah		
Description	Non-woven		
Repeat cm (ins)	120 (47¼) Half drop		
Roll Size	9m x 70cm (10yds x 27½) 6.3m ² (7½yd ²)		
Care Instruction			
FR Rating UK	EN15102/EN13501 B S1,d0	FR Rating USA	ASTM E-84 Class A (NFPA 255)
Country of Origin	UK		



CHELLAH W7907-01



W7907-02



W7907-03



W7907-04

BYZANCE WALLPAPERS



SELENE – an elegant brushed metallic foil with a subtle crosshatch design and a refined soft sheen, available in six neutral shades of opal, pewter, citrine, sovereign, gold and copper. In Greek mythology, *Selene* is the goddess of the moon.

Pattern No.	W7920-01 to 06		
Pattern	Selene		
Description	Non-woven		
Repeat cm (ins)	102 (47¼)		
Roll Size	10m x 1m (11yds x 39½) 10m ² (12yd ²)		
Care Instruction			
FR Rating UK	EN15102/EN13501 B S1,d0	FR Rating USA	ASTM E-84 Class A (NFPA 255)
Country of Origin	China		



SELENE W7920-01



W7920-02



W7920-03



W7920-04



W7920-05



W7920-06

NATURAL WALLCOVERINGS

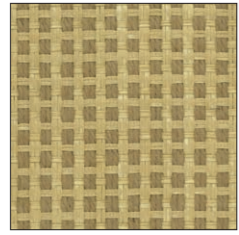


PAPYRUS – offers a modern reinterpretation of the ancient art of paper weaving, bonded to an easy-to-hang non-woven backing. The designs are presented in a colour palette, encompassing natural tones like walnut, camel, and bamboo, as well as livelier options such as peacock and gold.

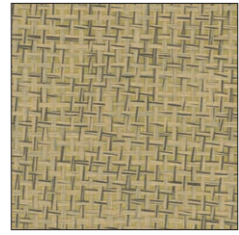
Pattern No.	W7930-01 to 17		
Pattern	Papyrus		
Description	Non-woven		
Repeat cm (ins)	- (-)		
Roll Size	5.5m x 91.5cm (6yds x 1yd) 5.03 m ² (6yd ²)		
Care Instruction			
FR Rating UK	EN15102/EN13501 B S1,d0	FR Rating USA	ASTM E-84 Class A (NFPA 255)
Country of Origin	China		



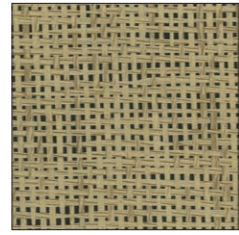
PAPYRUS W7930-01



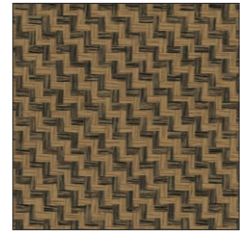
W7930-02



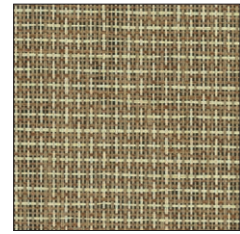
W7930-03



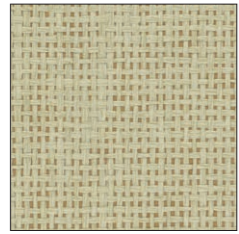
W7930-04



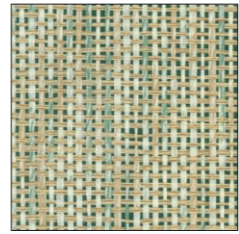
W7930-05



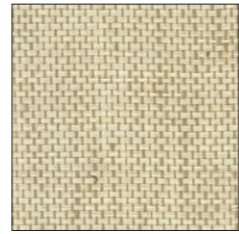
W7930-06



W7930-07



W7930-08



W7930-09



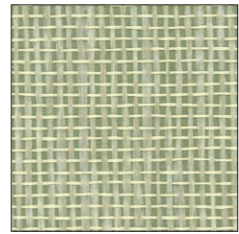
W7930-10



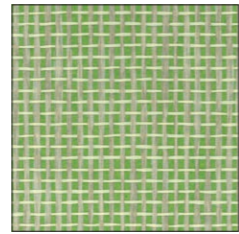
W7930-11



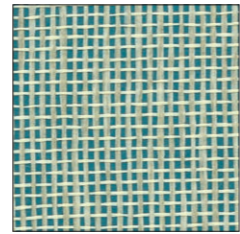
W7930-12



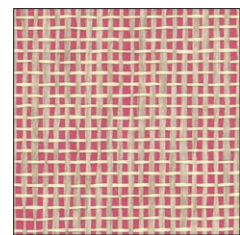
W7930-13



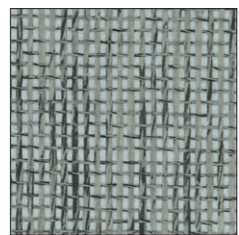
W7930-14



W7930-15



W7930-16



W7930-17

BYZANCE TRIMMINGS

BYZANCE TRIMMINGS

Five decorative braids, and a delightful border with oversized pom-poms, are designed to adorn and perfectly complement both plain and patterned fabrics. This colourful collection of trimmings offers a variety of designs including ombre lattice, stylised florals and leaves, and elegant geometrics.

BYZANCE TRIMMINGS



TANISKA BRAID – an embroidered linen braid featuring an interlocking trellis design, which creates an ombré colour effect. This design is also available in its printed form within the TANISKA fabric and wallpaper.

Pattern No.	T810-01 to 04	Care Symbols	☒ ☒ ☒ ☒ ☒
Pattern	Taniska Braid	Care Code	8
Width cm (ins)	6.5 (2½)	UK Flamm. Code	L
Repeat cm (ins)	4.8 (2)	Weight GSM	58
Content	90% L; 10% VI	Country of Origin	India



TANISKA BRAID T810-01



T810-02



T810-03



T810-04

BYZANCE TRIMMINGS



PUSHKAR BRAID – a striking cotton braid, embroidered with a repeating leaf scroll pattern and adorned with hand-sewn pompoms in two complementary colour tones.

Pattern No.	T811-01 to 05	Care Symbols	☒ ☒ ☒ ☒ ☒
Pattern	Pushkar Braid	Care Code	8
Width cm (ins)	9 (3½)	UK Flamm. Code	L
Repeat cm (ins)	9.5 (3¾)	Weight GSM	90
Content	100% CO	Country of Origin	India



PUSHKAR BRAID T811-01



T811-02



T811-03



T811-04



T811-05

BYZANCE TRIMMINGS



BANYAN BRAID – woven with a cotton satin ground, and using cut and uncut velvet techniques, this braid showcases a garland of stylised leaves with shiny highlights, beautifully framed by a border stripe.

Pattern No.	T812-01,02,03	Care Symbols	☒ ☒ ☒ ☒ ☒
Pattern	Banyan Braid	Care Code	8
Width cm (ins)	13 (5)	UK Flamm. Code	L
Repeat cm (ins)	32 (13½)	Weight GSM	90
Content	63% VI; 37% CO	Country of Origin	India



BANYAN BRAID T812-01



T812-02



T812-03

BYZANCE TRIMMINGS



SEVARA BRAID – a jacquard-woven braid featuring multi-coloured organic geometric shapes, subtly enhanced by an irregular pattern creating texture. The braid is edged with an intricate border stripe.

Pattern No.	T813-01 to 04	Care Symbols	☒ ☒ ☒ ☒ ☒
Pattern	Sevara Braid	Care Code	8
Width cm (ins)	8.5 (3)	UK Flamm. Code	L
Repeat cm (ins)	39 (15)	Weight GSM	62
Content	76% VI; 18% CO; 6% PL	Country of Origin	India



SEVARA BRAID T813-01



T813-02



T813-03



T813-04

BYZANCE TRIMMINGS



CATALPA BRAID – this embroidered braid, presents a stylised canopy of trees adorned with velvet tufts, on a rich ottoman-effect background, edged with a contrasting colour stripe.

Pattern No.	T814-01,02,03	Care Symbols	☒ ☒ ☒ ☒ ☒
Pattern	Catalpa Braid	Care Code	8
Width cm (ins)	10 (4)	UK Flamm. Code	L
Repeat cm (ins)	40 (15½)	Weight GSM	82
Content	100% CO	Country of Origin	India



CATALPA BRAID T814-01



T814-02



T814-03

BYZANCE TRIMMINGS



PAVILION BRAID – a wide herringbone linen/cotton braid with an elegant trellis design, artfully embroidered using a technique that emulates velvet. It is finished with an edging in a contrasting colour stripe.

Pattern No.	T815-01 to 05	Care Symbols	☒ ☒ ☒ ☒ ☒
Pattern	Pavilion Braid	Care Code	8
Width cm (ins)	11 (4½)	UK Flamm. Code	L
Repeat cm (ins)	6.5 (2½)	Weight GSM	94
Content	60% VI; 20% CO; 20% LI	Country of Origin	India



PAVILION BRAID T815-01



T815-02



T815-03



T815-04



T815-05

LANSDOWNNE

Introducing a versatile collection of upholstery fabrics that encompass a wide array of patterns, including herringbone, stripes, and jacquard weaves, combined with a variety of luxury textures. These timeless designs are presented in a harmonious mix of delicate shades, rich opulent hues, and useful neutrals.

The names are taken from the iconic streets of West London.



LANSDOWNNE

COLVILLE – a cut and un-cut velvet features multi-coloured diamonds with an ikat design, presented on a neutral-coloured slubbed ground.

Pattern No.	F7870-01 to 05	End Use	
Pattern	Colville	UK Flamm. Code	C + M
Width cm (ins)	137 (54)	Martindale	60,000
Repeat cm (ins)	23 (9)	Grade	SC
Content	44% CO; 37% VI; 19% PL	Wing Rip Warp Weft	170N 97N
Care Symbols		Weight GSM	598
Care Code	8	Country of Origin	India



COLVILLE F7870-01



F7870-02



F7870-03



F7870-04



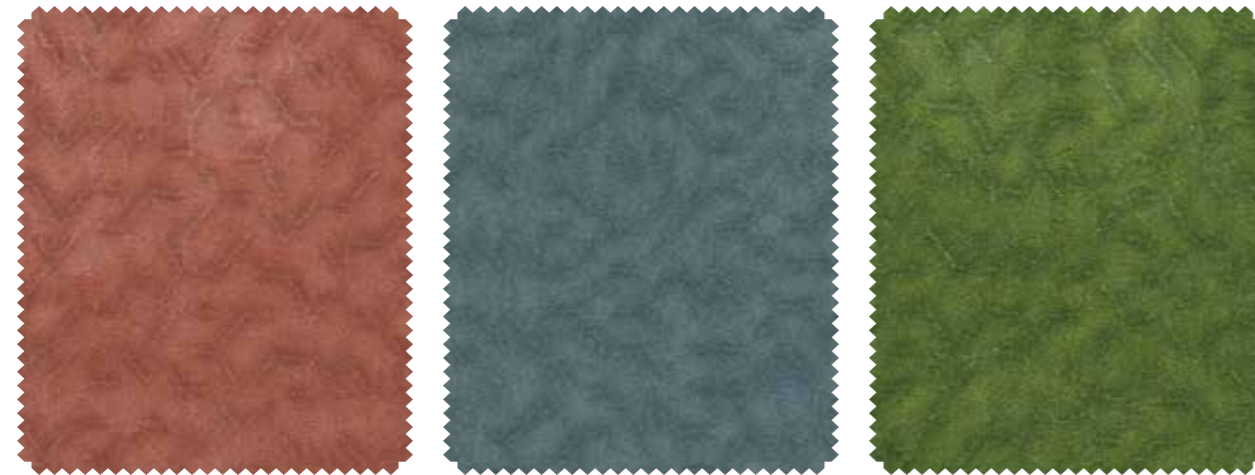
F7870-05

LANSDOWNE



TALBOT – a jacquard velvet with subtle variations in colour creates a shadow-like effect.

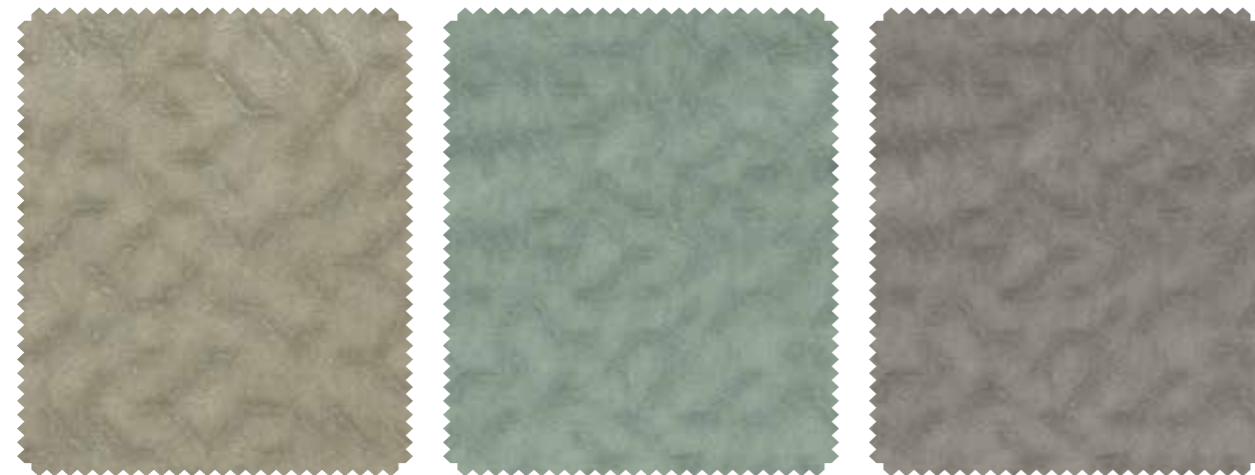
Pattern No.	F7871-01 to 05	End Use	
Pattern	Talbot	UK Flamm. Code	C + M
Width cm (ins)	130 (51)	Martindale	100,000
Repeat cm (ins)	- (-)	Grade	SC
Content	38% CO; 34% WM; 22% VI; 6% LI	Wing Rip Warp Weft	63N 26N
Care Symbols		Weight GSM	646
Care Code	8	Country of Origin	Italy



TALBOT F7871-01

F7871-02

F7871-03



F7871-04

F7871-05

F7871-06

LANSDOWNE



ELGIN – a jacquard stripe featuring an irregular herringbone design, with a tactile slubbed pinstripe.

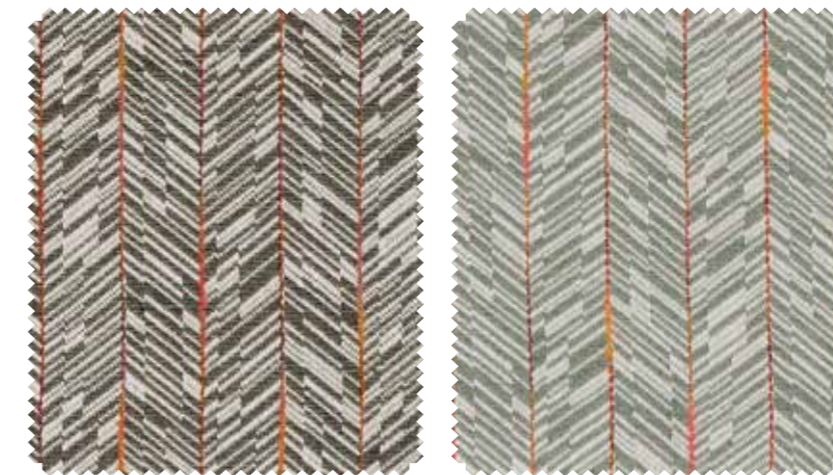
Pattern No.	F7872-01 to 05	End Use	
Pattern	Elgin	UK Flamm. Code	C + M
Width cm (ins)	140 (55)	Martindale	25,000
Repeat cm (ins)	26 (10¼)	Grade	GD
Content	50% VI; 20% LI; 15% CO; 13% PL; 1% PA; 1% WV	Wing Rip Warp Weft	220N 170N
Care Symbols		Weight GSM	530
Care Code	5	Country of Origin	Italy



ELGIN F7872-01

F7872-02

F7872-03



F7872-04

F7872-05

LANSDOWNE



NORLAND – a chunky herringbone weave featuring space-dyed yarns.

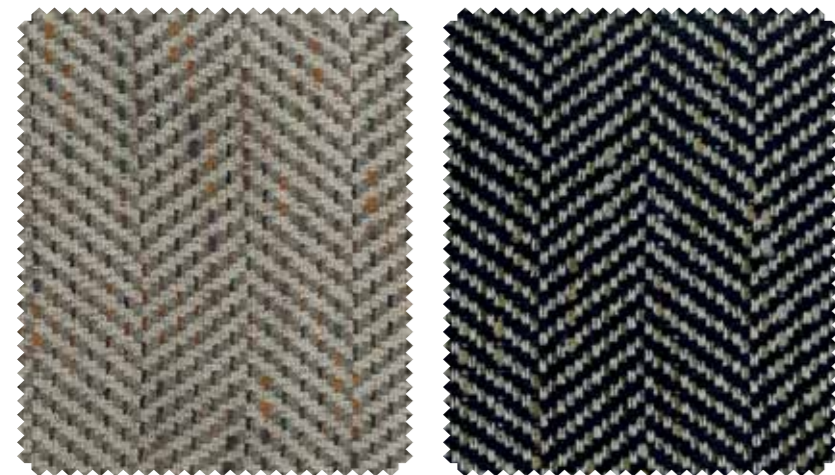
Pattern No.	F7873-01 to 05	End Use	
Pattern	Norland	UK Flamm. Code	Z
Width cm (ins)	150 (59)	Martindale	80,000
Repeat cm (ins)	1.5 (½)	Grade	SC
Content	44% PL; 20% WO; 18% CO; 15% PC; 3% PA	Wing Rip Warp Weft	158N 71N
Care Symbols		Weight GSM	530
Care Code	5	Country of Origin	Italy



NORLAND F7873-01

F7873-02

F7873-03



F7873-04

F7873-05

LANSDOWNE



COURTNELL – a jacquard design featuring a ripple pattern woven in chenille.

Pattern No.	F7874-01 to 05	End Use	
Pattern	Courtneil	UK Flamm. Code	C + M
Width cm (ins)	137 (54)	Martindale	12,000
Repeat cm (ins)	- (-)	Grade	OD
Content	42% CO; 34% VI; 24% PL	Wing Rip Warp Weft	160N 262N
Care Symbols		Weight GSM	595
Care Code	22	Country of Origin	Turkey



COURTNELL F7874-01

F7874-02

F7874-03



F7874-04

F7874-05

LANSDOWNNE



PORTLAND – a chunky horizontal wool bouclé stripe.

Pattern No.	F7875-01 to 04	End Use	
Pattern	Portland	UK Flamm. Code	Z
Width cm (ins)	142 (56)	Martindale	45,000
Repeat cm (ins)	14 (5½)	Grade	SC
Content	24% WV; 22% PL; 22% PC; 14% VI; 12% CO; 6% LI	Wing Rip Warp Weft	365N 435N
Care Symbols		Weight GSM	700
Care Code	5	Country of Origin	Italy



PORTLAND F7875-01



F7875-02



F7875-03



F7875-04

LANSDOWNNE



CLARENDON – an ogee trellis design features a marled effect created by twisted yarns in two colours.

Pattern No.	F7876-01,02,03	End Use	
Pattern	Clarendon	UK Flamm. Code	C + M
Width cm (ins)	144 (56¾)	Martindale	35,000
Repeat cm (ins)	3 (1¼)	Grade	GC
Content	45% VI; 22% CO; 18% PL; 6% LI; 5% WO; 4% PA	Wing Rip Warp Weft	190N 270N
Care Symbols		Weight GSM	600
Care Code	5	Country of Origin	Italy



CLARENDON F7876-01



F7876-02



F7876-03

ALFRESCO OUTDOOR / INDOOR

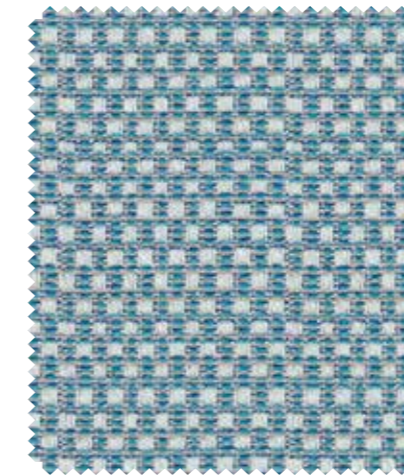
Six textured plain and semi-plain fabrics are designed to complement Osborne & Little's decorative outdoor collections. These fabrics combine style and practicality and are perfect for both outdoors and indoors with attributes such as stain-resistant, anti-bacterial qualities, mildew-resistant and water repellent. Drawing inspiration from water elements and coastal landscapes, the collection is presented in a palette that spans warm, sunny tones to cool, calming shades.



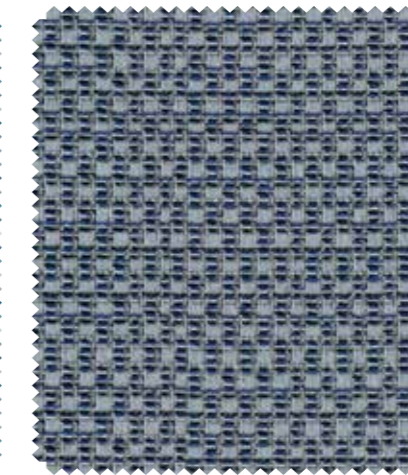
ALFRESCO OUTDOOR / INDOOR FABRICS

SPLASH – a small-scale chequerboard, woven in tonal colours and neutral shades.

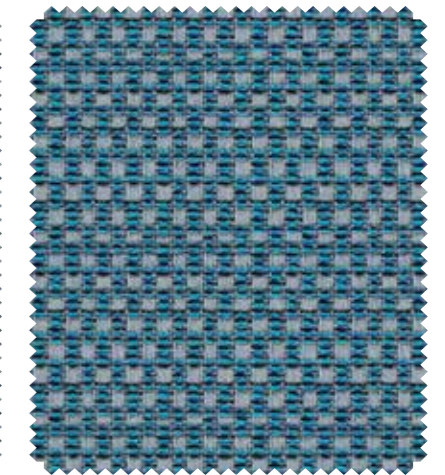
Pattern No.	F7860-01 to 06	End Use	
Pattern	Splash	UK Flamm. Code	Z
Width cm (ins)	143 (56¼)	Martindale	25,000
Repeat cm (ins)	12 (4¾)	Grade	GD
Content	100% PO	Wing Rip Warp Weft	530N 260N
Care Symbols		Weight GSM	435
Care Code	25	Country of Origin	India



SPLASH F7860-01



F7860-02



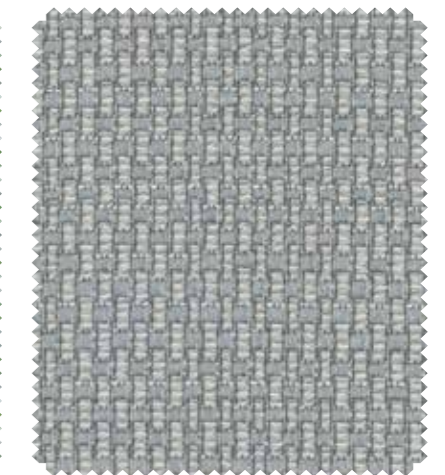
F7860-03



F7860-04



F7860-05



F7860-06

FibreGuard, applied to SPLASH, COVE, RIVERINE, TRESKO and BEACHCOMBER, tackles household stains easily. It provides excellent durability with low maintenance. FibreGuard resists ballpoint pen, coffee, red wine, ketchup, mud and more whilst being child and pet friendly.

ALFRESCO OUTDOOR / INDOOR



COVE – a semi-plain, woven with fine bouclé yarns.

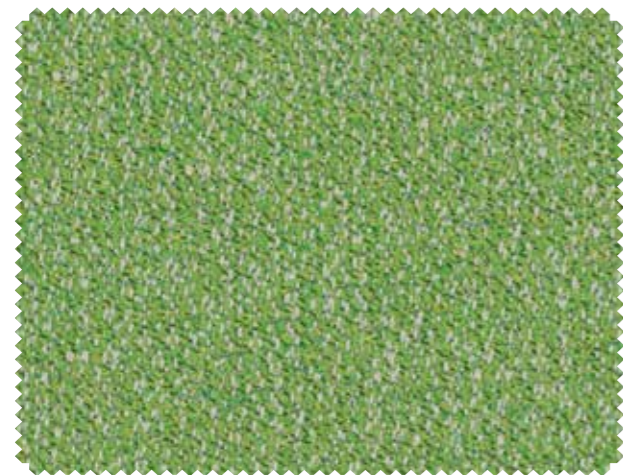
Pattern No.	F7861-01 to 04	End Use	
Pattern	Cove	UK Flamm. Code	Z
Width cm (ins)	143 (56¼)	Martindale	45,000
Repeat cm (ins)	- (-)	Grade	SC
Content	100% PO	Wing Rip Warp Weft	300N 530N
Care Symbols		Weight GSM	540
Care Code	25	Country of Origin	India



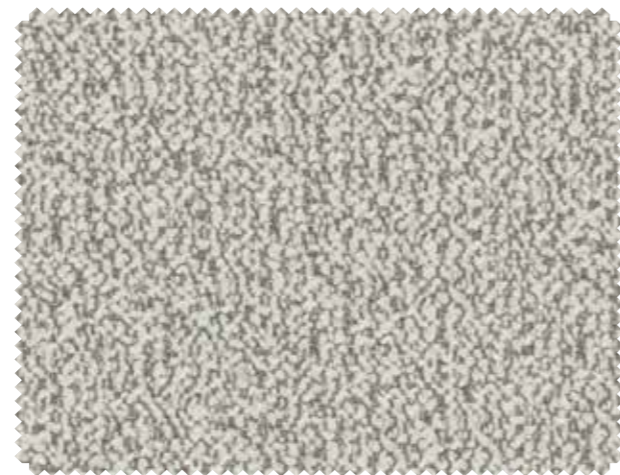
COVE F7861-01



F7861-02



F7861-03



F7861-04

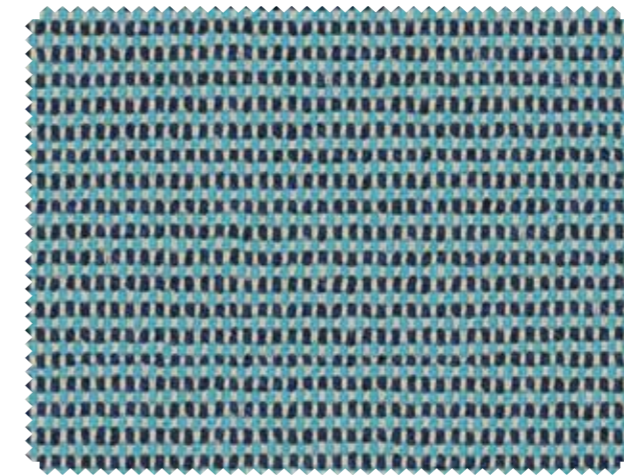
FibreGuard, applied to SPLASH, COVE, RIVERINE, TRESKO and BEACHCOMBER, tackles household stains easily. It provides excellent durability with low maintenance. FibreGuard resists ballpoint pen, coffee, red wine, ketchup, mud and more whilst being child and pet friendly.

ALFRESCO OUTDOOR / INDOOR

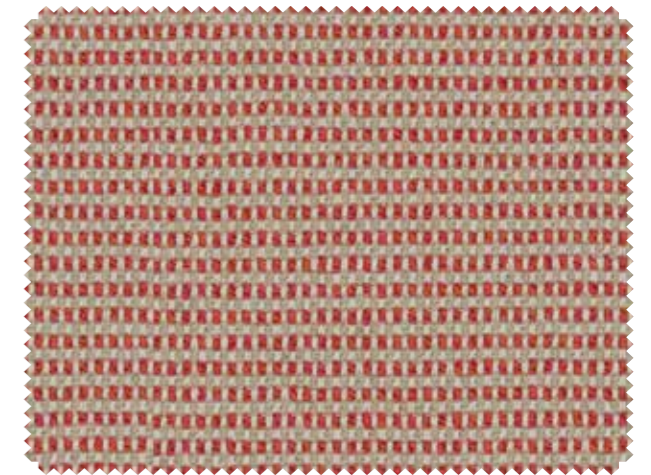


RIVERINE – alternating colours across a neutral warp create a horizontal stripe with a basketweave structure.

Pattern No.	F7862-01,02,03	End Use	
Pattern	Riverine	UK Flamm. Code	Z
Width cm (ins)	146 (57½)	Martindale	60,000
Repeat cm (ins)	1 (½)	Grade	SC
Content	100% PO	Wing Rip Warp Weft	600N 400N
Care Symbols		Weight GSM	543
Care Code	25	Country of Origin	India



RIVERINE F7862-01



F7862-02



F7862-03

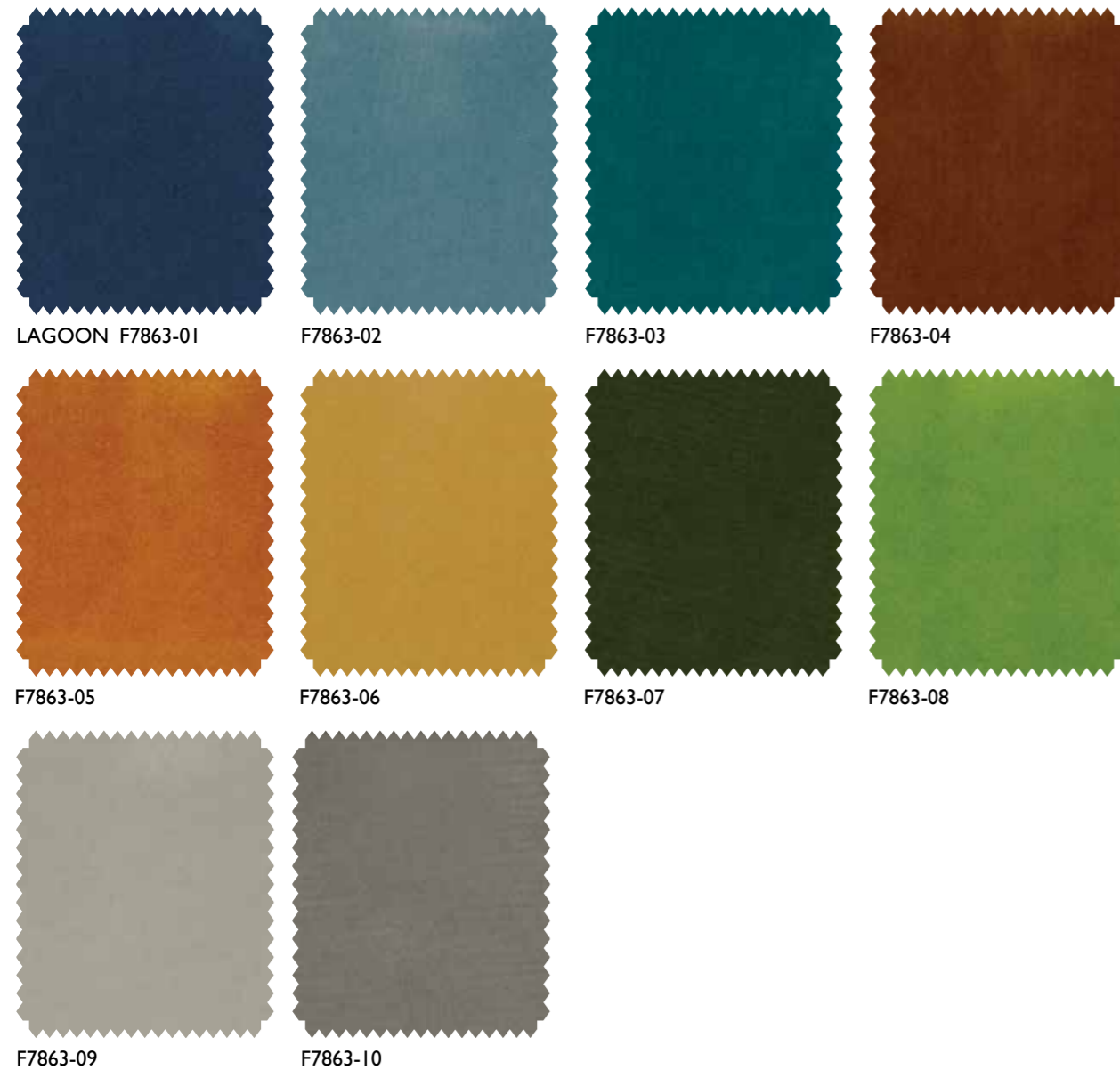
FibreGuard, applied to SPLASH, COVE, RIVERINE, TRESKO and BEACHCOMBER, tackles household stains easily. It provides excellent durability with low maintenance. FibreGuard resists ballpoint pen, coffee, red wine, ketchup, mud and more whilst being child and pet friendly.

ALFRESCO OUTDOOR / INDOOR



LAGOON – a short-pile matt velvet, in coastal colours.

Pattern No.	F7863-01 to 10	End Use	
Pattern	Lagoon	UK Flamm. Code	Z
Width cm (ins)	142 (56)	Martindale	100,000
Repeat cm (ins)	- (-)	Grade	SC
Content	100% rPET	Wing Rip Warp Weft	62N 51N
Care Symbols		Weight GSM	426
Care Code	31	Country of Origin	Turkey



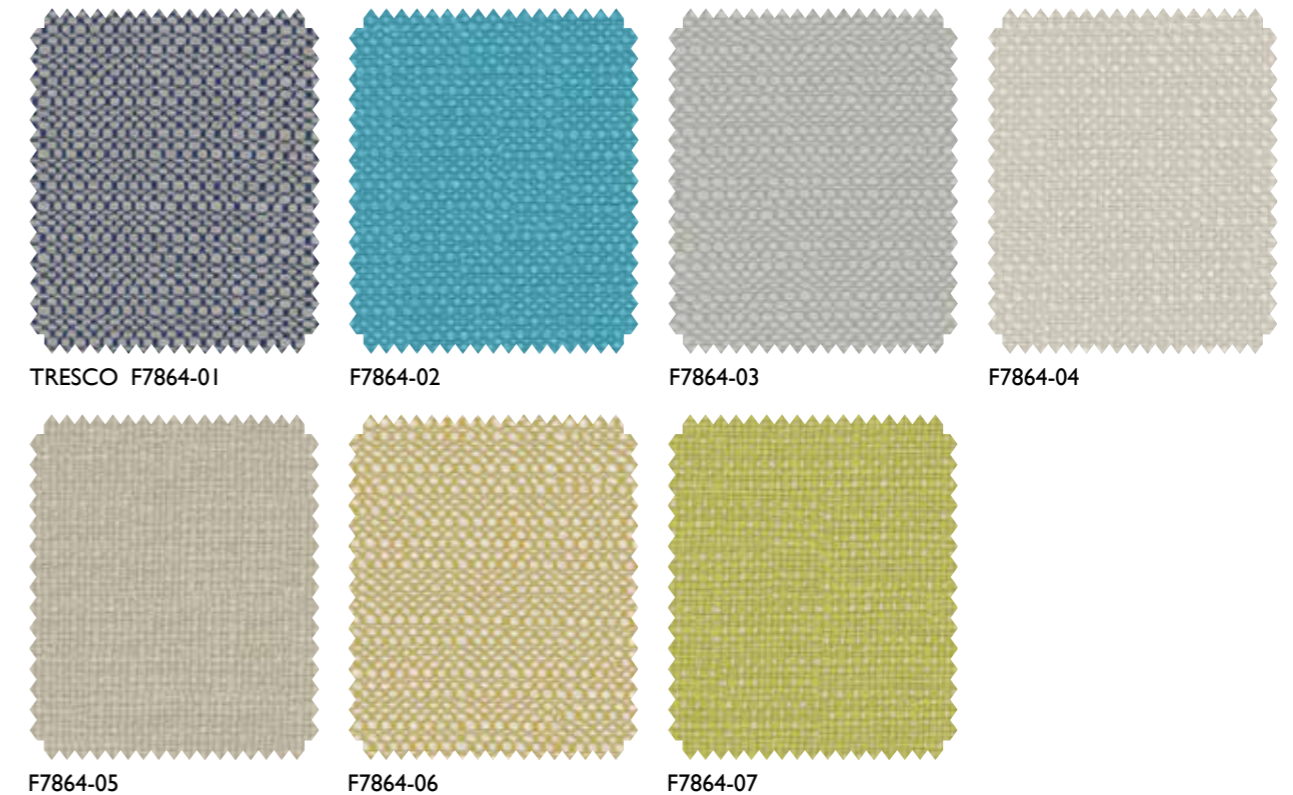
EasyLife, applied to LAGOON, provides resistance to seawater, chlorine, perspiration and bacteria.

ALFRESCO OUTDOOR / INDOOR



TRESKO – an oversized basket-weave.

Pattern No.	F7864-01 to 07	End Use	
Pattern	Tresco	UK Flamm. Code	Z
Width cm (ins)	139 (54¾)	Martindale	25,000
Repeat cm (ins)	- (-)	Grade	GD
Content	100% PO	Wing Rip Warp Weft	190N 920N
Care Symbols		Weight GSM	500
Care Code	25	Country of Origin	India



FibreGuard, applied to SPLASH, COVE, RIVERINE, TRESKO and BEACHCOMBER, tackles household stains easily. It provides excellent durability with low maintenance. FibreGuard resists ballpoint pen, coffee, red wine, ketchup, mud and more whilst being child and pet friendly.

ALFRESCO OUTDOOR / INDOOR



BEACHCOMBER – a horizontal herringbone weave in neutral and coloured yarns.

Pattern No.	F7865-01 to 06	End Use	
Pattern	Beachcomber	UK Flamm. Code	Z
Width cm (ins)	146 (57½)	Martindale	40,000
Repeat cm (ins)	2 (¾)	Grade	SC
Content	100% PO	Wing Rip Warp Weft	340N 610N
Care Symbols		Weight GSM	517
Care Code	25	Country of Origin	India



BEACHCOMBER F7865-01



F7865-02



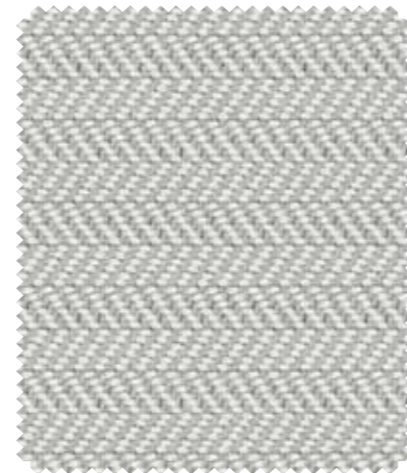
F7865-03



F7865-04



F7865-05



F7865-06

FibreGuard, applied to SPLASH, COVE, RIVERINE, TRESCO and BEACHCOMBER, tackles household stains easily. It provides excellent durability with low maintenance. FibreGuard resists ballpoint pen, coffee, red wine, ketchup, mud and more whilst being child and pet friendly.

CUMBRIA

STAIN-RESISTANT

CUMBRIA STAIN-RESISTANT

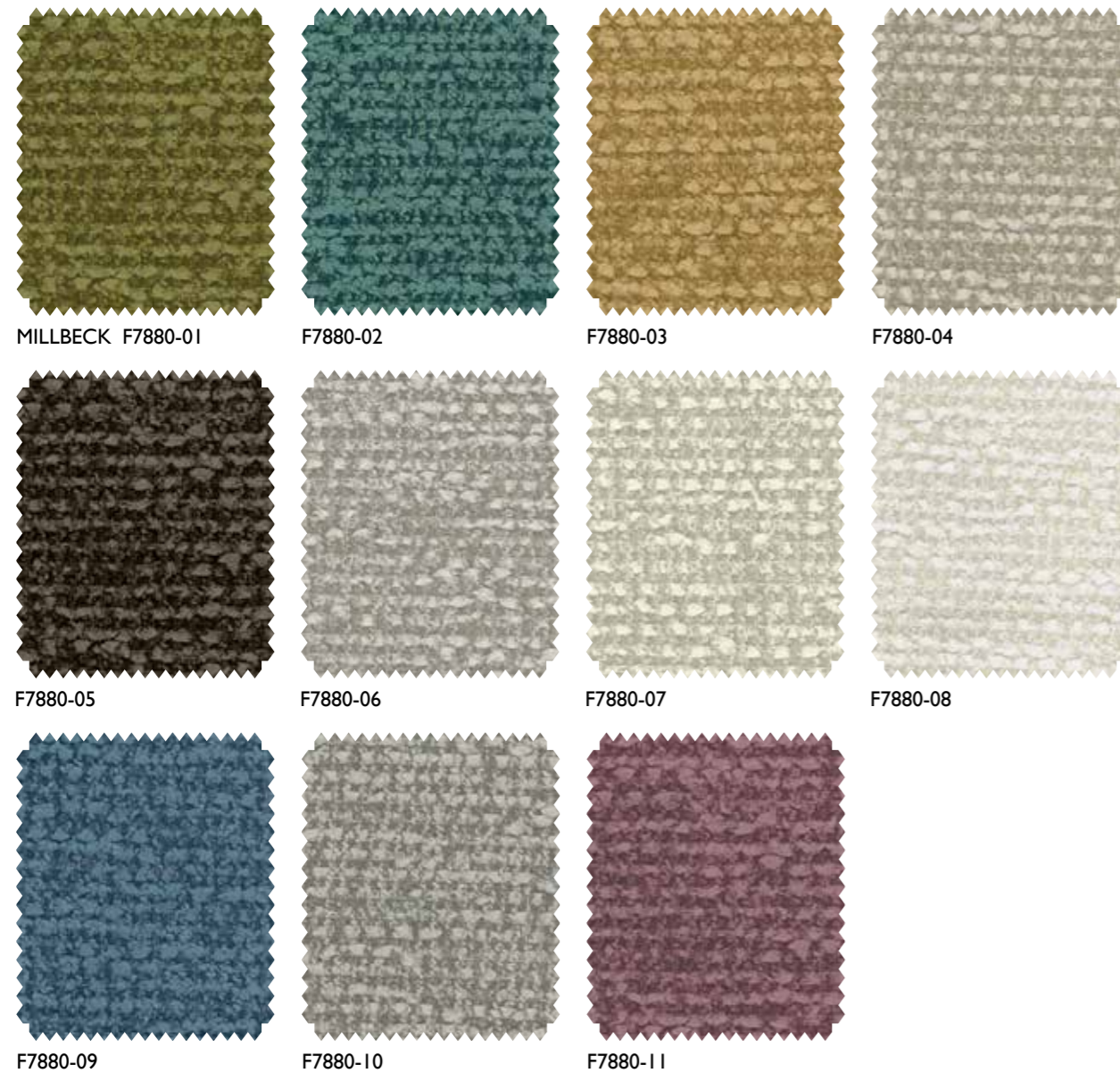
Three soft, textural upholstery fabrics, crafted from recycled polyester and treated with a stain-resistant finish for enhanced practicality, take their names from locations in the Lake District, Cumbria, England. The colour palette encompasses a range of tones, including lime and aqua, alongside earthy shades like terracotta and taupe, as well as neutral hues like linen and ivory, capturing the essence of nature. All the designs have an excellent Martindale abrasion of 48,000 or more.

CUMBRIA STAIN-RESISTANT



MILLBECK – a two-tone tufted plain.

Pattern No.	F7880-01 to 11	End Use	
Pattern	Millbeck	UK Flamm. Code	Z
Width cm (ins)	145 (57)	Martindale	48,000
Repeat cm (ins)	- (-)	Grade	SC
Content	100% rPET	Wing Rip Warp Weft	192N 135N
Care Symbols		Weight GSM	510
Care Code	16	Country of Origin	China



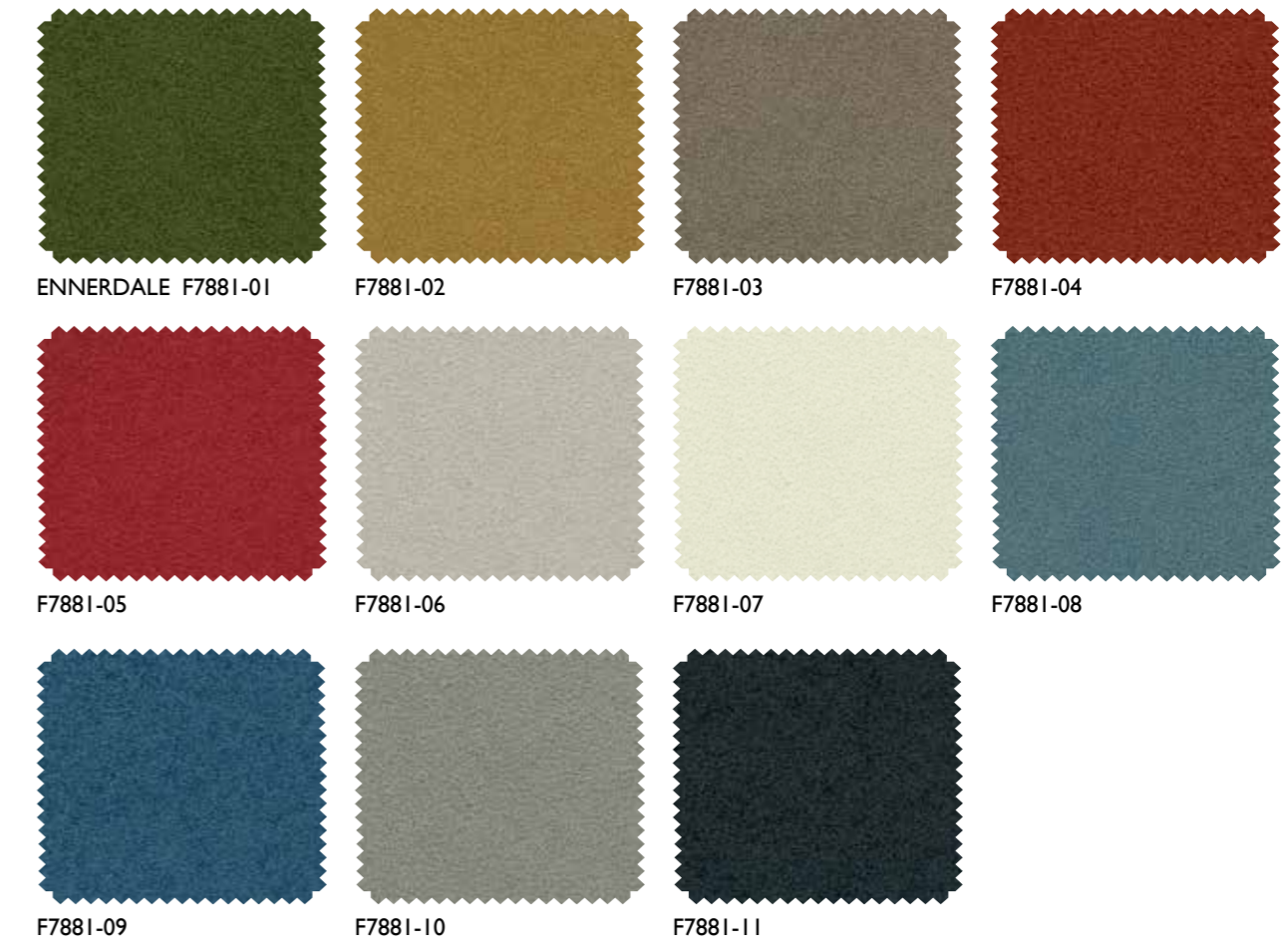
EasyClean, applied to Cumbria, provides resistance to seawater; chlorine, perspiration and bacteria.

CUMBRIA STAIN-RESISTANT



ENNERDALE – a fine bouclé plain.

Pattern No.	F7881-01 to 11	End Use	
Pattern	Ennerdale	UK Flamm. Code	Z
Width cm (ins)	143 (56¼)	Martindale	100,000
Repeat cm (ins)	- (-)	Grade	SC
Content	100% rPET	Wing Rip Warp Weft	55N 66N
Care Symbols		Weight GSM	410
Care Code	8	Country of Origin	Turkey



EasyClean, applied to Cumbria, provides resistance to seawater; chlorine, perspiration and bacteria. In addition Ennerdale is water and soil repellent.

CUMBRIA STAIN-RESISTANT



LORTON – a basket-weave pattern woven with chunky chenille

Pattern No.	F7882-01 to 12	End Use	
Pattern	Lorton	UK Flamm. Code	Z
Width cm (ins)	144 (56¾)	Martindale	48,000
Repeat cm (ins)	1.7 (¾)	Grade	SC
Content	100% rPET	Wing Rip Warp Weft	192N 135N
Care Symbols		Weight GSM	520
Care Code	16	Country of Origin	China



LORTON F7882-01



F7882-02



F7882-03



F7882-04



F7882-05



F7882-06



F7882-07



F7882-08



F7882-09



F7882-10



F7882-11



F7882-12

EasyClean, applied to Cumbria, provides resistance to seawater, chlorine, perspiration and bacteria.

FONTHILL STAIN-RESISTANT

FONTHILL STAIN-RESISTANT

Three versatile stain-resistant fabrics take their names from villages in the beautiful Nadder Valley of Wiltshire, England. The essential colour palette centres around neutral tones, carefully chosen to complement a wide array of interior schemes. All the designs have an excellent Martindale abrasion of 40,000 or more.

FONTHILL STAIN-RESISTANT



TEFFONT – a distinctive hexagonal quilt-effect pattern.

Pattern No.	F7840-01 to 09	End Use	
Pattern	Teffont	UK Flamm. Code	Z
Width cm (ins)	140 (55)	Martindale	40,000
Repeat cm (ins)	5 (2)	Grade	SC
Content	83% PL; 17% CO	Wing Rip Warp Weft	432N 348N
Care Symbols		Weight GSM	708
Care Code	26	Country of Origin	India



FibreGuard Stain-Resistant Technology tackles household stains easily. It provides excellent durability with low maintenance. FibreGuard resists ballpoint pen, coffee, red wine, ketchup, mud and more whilst being child and pet friendly.

FONTHILL STAIN-RESISTANT



DINTON – a matt, closely spun bouclé texture.

Pattern No.	F7841-01 to 13	End Use	
Pattern	Dinton	UK Flamm. Code	Z
Width cm (ins)	143 (56¼)	Martindale	90,000
Repeat cm (ins)	- (-)	Grade	SC
Content	100% PL	Wing Rip Warp Weft	134N 694N
Care Symbols		Weight GSM	535
Care Code	26	Country of Origin	China



FibreGuard Stain-Resistant Technology tackles household stains easily. It provides excellent durability with low maintenance. FibreGuard resists ballpoint pen, coffee, red wine, ketchup, mud and more whilst being child and pet friendly.

FONTHILL STAIN-RESISTANT



TISBURY – a flat-woven twill with a subtle marled undertone.

Pattern No.	F7842-01 to 16	End Use	
Pattern	Tisbury	UK Flamm. Code	Z
Width cm (ins)	145 (57)	Martindale	50,000
Repeat cm (ins)	- (-)	Grade	SC
Content	100% PL	Wing Rip Warp Weft	135N 82N
Care Symbols		Weight GSM	320
Care Code	26	Country of Origin	China



FibreGuard Stain-Resistant Technology tackles household stains easily. It provides excellent durability with low maintenance. FibreGuard resists ballpoint pen, coffee, red wine, ketchup, mud and more whilst being child and pet friendly.

TECHNICAL SPECIFICATIONS


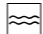







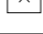
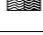
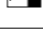
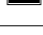
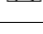

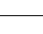
COMPOSITION CODES		FABRIC CARE SYMBOLS	
CL	CELLULOSE		Do not use chlorine or bleach
CO	COTTON		Chlorine or bleach may be used
CP	POLYCOTTON		Professional dry clean – P process
CU	CUPRO		Do not dry clean
EA	ELASTINE		Max temperature of wash 30°C
FR-PL	POLYESTER		Max temperature of wash 40°C – Medium wash / short spin
GL	GLASS		Hand wash only
HA	HEMP		Do not wash
JU	JUTE		Maximum temperature 110°C-cool
LI	LINEN		Maximum temperature 150°C-warm
MA	MODACRYLIC		Maximum temperature 200°C-hot
ME	METAL		Do not iron
OC	ORGANIC COTTON		Do not use steam
PA	NYLON/POLYAMIDE		Do not tumble dry
PC	ACRYLIC		Tumble dry
PE	PEARL		
PL	POLYESTER		
PM	METALLICIZED POLYESTER		
PO	POLYOLEFIN		
PP	POLYPROPYLENE		
PS	PLASTIC		
PU	POLYURETHANE		
PVC	POLYVINYL CHLORIDE		
rCO	RECYCLED COTTON		
rPET	RECYCLED POLYETHYLENE		
SE	SILK		
SH	SHELL		
TR	TREVIRA CS		
VI	VISCOSE/RAYON		
WD	WOOD		
WL	LLAMA WOOL		
WM	MOHAIR WOOL		
WO	WOOL		
WP	ALPACA WOOL		
WV	VIRGIN WOOL		

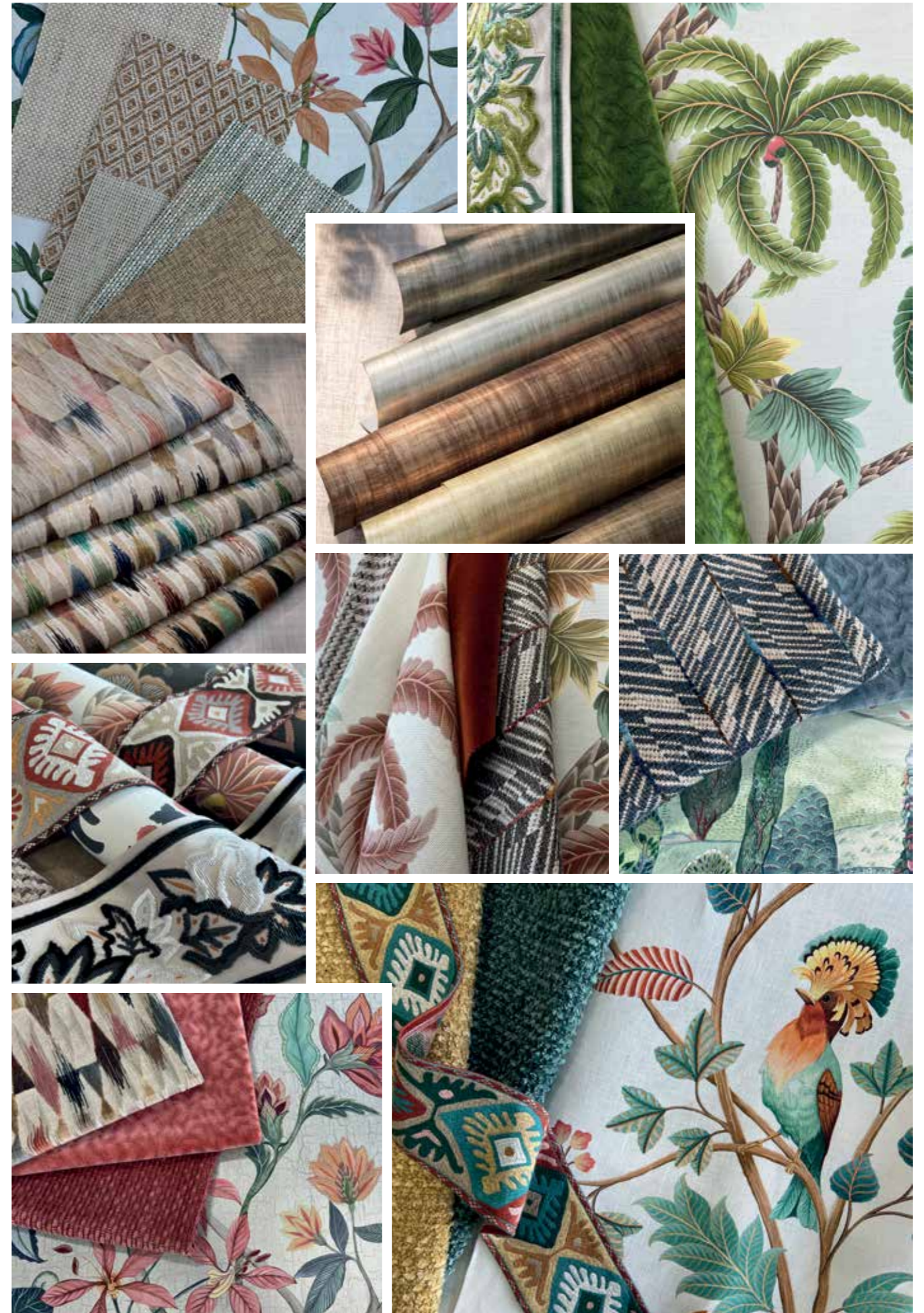
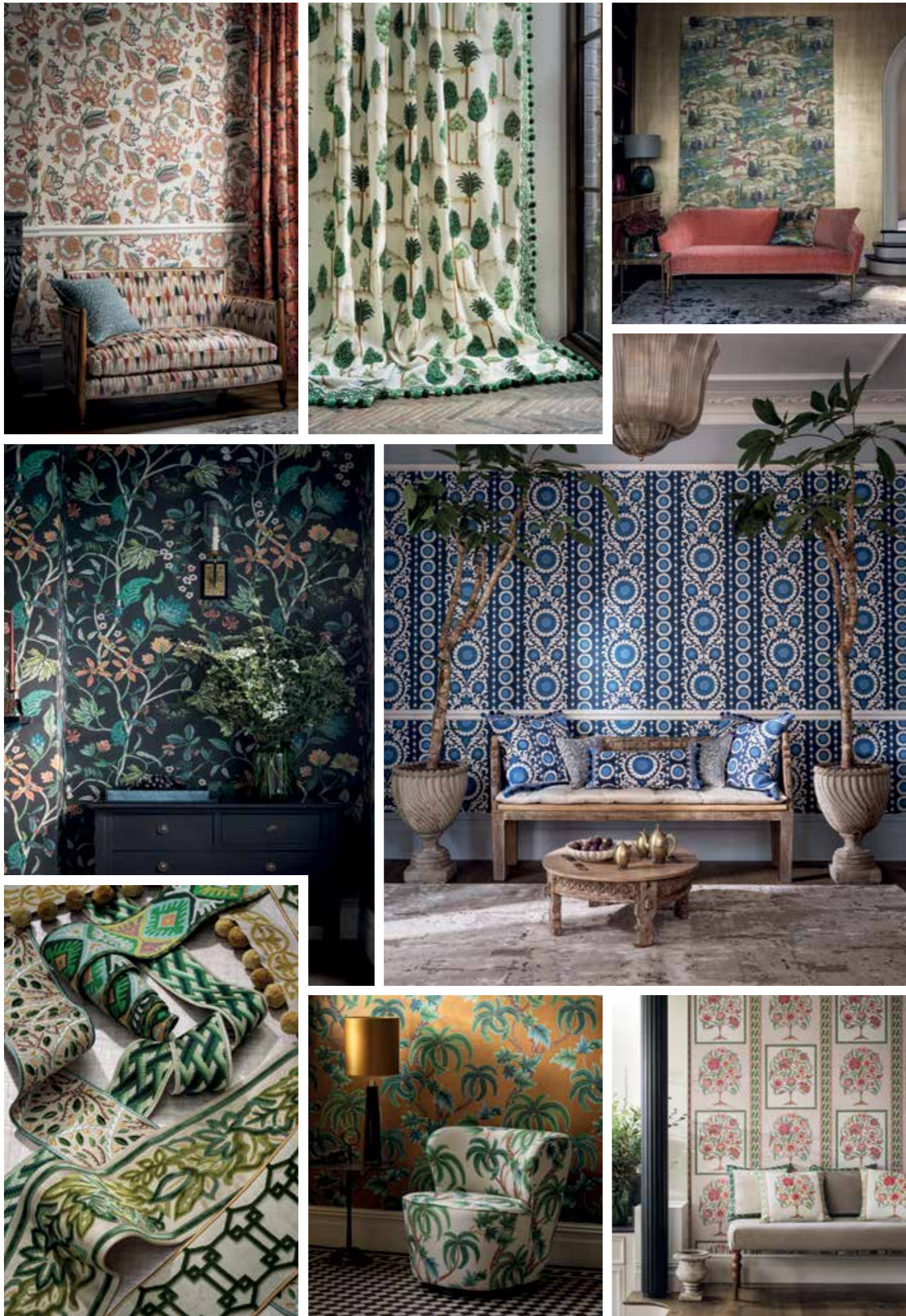
RECOMMENDED FABRIC USAGE CODES	
	curtains / rideaux / Gardinen / tende / cortinas
	loose upholstery / housses de sièges / Hussen / sfoderabile / tapicería en funda
	tight upholstery / sièges / Polsterung / imbottiti / tapicería
	contract / hôtellerie / Objekt geeignet / uso alberghiero / proyectos

UPHOLSTERY GRADE CODES			
OD	Occasional Domestic	HD	Heavy Domestic
LD	Light Domestic	SD	Severe Domestic
GC	General Contract	SC	Severe Contract
GD	General Domestic		

FLAMMABILITY CODES	
A	Resistant to smouldering cigarette tested over standard foam
B	Resistant to smouldering cigarette tested over standard foam plus 2 1/2 oz polyester wrap
C	Resistant to smouldering cigarette tested over low density CMHR foam
D	Resistant to smouldering cigarette tested over high density CMHR foam 35kg M³
G	Schedule 3 interliner resistant to ignition Source 5 tested over standard foam
H	Match resistant
L	Trimmings exempt from regulation
M	Must be used with a schedule 3 (Source 5) interliner
N/A	Not yet tested. Refer to us if required for use in domestic upholstery
V	Meets BS5867: Part 2 Type B (Curtain and Drapes)
X	Meets BS5852: Part 2 Source 5 (CRIB 5) over CMHR foam
Z	Not to be used for domestic upholstery in the UK unless suitable for treatment

MARTINDALE ABRASION			
Plain and patterned fabrics suitable for upholstery with a Martindale abrasion of 40,000 or greater are:			
FONTHILL STAIN-RESISTANT			
DESIGN NAME	CODE	MARTINDALE ABRASION	WING RIP NEWTONS WARP & WEFT
Teffont	F7840-01 to 09	40,000	432N 348N
Dinton	F7841-01 to 13	90,000	134N 694N
Tisbury	F7842-01 to 16	50,000	135N 82N
ALFRESCO OUTDOOR / INDOOR STAIN-RESISTANT			
DESIGN NAME	CODE	MARTINDALE ABRASION	WING RIP NEWTONS WARP & WEFT
Cove	F7861-01 to 04	45,000	300N 530N
Riverine	F7862-01,02,03	60,000	600N 400N
Lagoon	F7863-01 to 10	100,000	62N 51N
Beachcomber	F7865-01 to 06	40,000	340N 610N
LANSDOWNE			
DESIGN NAME	CODE	MARTINDALE ABRASION	WING RIP NEWTONS WARP & WEFT
Colville	F7870-01 to 05	60,000	170N 97N
Talbot	F7871-01 to 06	100,000	63N 26N
Norland	F7873-01 to 05	80,000	158N 71N
Portland	F7875-01 to 04	45,000	365N 435N
CUMBRIA STAIN-RESISTANT			
DESIGN NAME	CODE	MARTINDALE ABRASION	WING RIP NEWTONS WARP & WEFT
Millbeck	F7880-01 to 11	48,000	192N 135N
Ennerdale	F7881-01 to 11	100,000	55N 66N
Lorton	F7882-01 to 12	48,000	192N 135N

WALLPAPER CARE CODES	
	spongeable / peut être épongé / mit Schwamm abwischbar / lavabile con spugna / se puede lavar con esponja
	washable / lavable / waschbar / lavabile / lavable
	extra washable / extra lavable / extra abwaschbar / extra lavabile / extra lavable
	scrubbable / peut être brossé / scheuerbeständig / strofinabile / fregable
	adhesive applied to wallcovering / appliquer la colle sur le papier / Tapete kleistern / adesivo applicato alla carta da parati / cola aplicada al papel pintado
	adhesive applied to wall / appliquer la colle sur le mur / Wand kleistern / adesivo applicato alla parete / cola aplicada a la pared
	easy-to-cut / facile à couper / leicht zu schneiden / taglio facile / fácil de cortar
	easy-to-use / usage facile / leichte Handhabung / facile all'uso / fácil de usar
	easy-to-hang / facile à poser / leichte Anbringung / di facile posa / fácil colocación
	no curling / sans gondolage / geringe Wellneigung / privo di arricciature / sin doblezes
	moisture resistant / résistant à l'humidité / feuchtigkeitsbeständig / resistente all'umidità / resistente a la humedad
	impact resistant / résistant à l'impact / stoßfest / resistente all'impatto / resistente al impacto
	dimensional stability / stabilité dimensionnelle / formbeständig / stabilità dimensionale / estabilidad dimensional
	strippable / détachable / abziehbar / removibile / removable
	peelable / déchirable / abziehbar / removibile / apto para gotelé
	wet removal / se décolle après humidification / nass zu entfernen / rimuovere una volta umidificato / remoción húmeda





Nina Campbell
MARKETING BRIEF
SPRING 2024



INTRODUCING THE NEW **SPRING 2024** COLLECTIONS

CONTENTS

NINA CAMPBELL

DALLIMORE	04
DALLIMORE WEAVES	11
TECHNICAL SPECIFICATION	18
INSPIRATION	19

UK SHOWROOM Osborne & Little Design Centre Chelsea Harbour
First Floor Centre Dome London SW10 0XE Tel +44 (0)20 8812 3123

UK HEAD OFFICE Osborne & Little Riverside House 26 Osiers Road London SW18 1NH Tel +44 (0)20 8812 3000
France Tél 01 55 69 81 06 Germany Tel 069 50 98 51 71 Italy Tel 02 69633805 Spain Tel 91 275 78 12 USA Tel 203 359 1500
oandl@osborneandlittle.com osborneandlittle.com

DALLIMORE

An enchanting collection of floral prints and embroideries draws inspiration from the beautiful county of Kent, known as the 'garden of England'. The collection takes its name from William Dallimore, a pioneering English botanist who played a pivotal role in establishing the Bedgebury Pinetum in the heart of Kent.

DALLIMORE WEAVES offers companion and co-ordinating upholstery fabrics.



DALLIMORE

TUDELEY – a playful embroidered design featuring colourful pots and vases adorned with geometric patterns, all brimming with luxuriant foliage.

Pattern No.	NCF4530-01,02,03	End Use	☒
Pattern	Tudeley	UK Flamm. Code	N/A
Width cm (ins)	132 (52)	Martindale	N/A
Repeat cm (ins)	77 (30½)	Grade	N/A
Content	33% CO; 31% LI; 22% VI; 9% PC; 5% PL	Wing Rip Warp Weft	N/A
Care Symbols	☒ ☒ ☒ ☒ ☒	Weight GSM	538
Care Code	8	Country of Origin	India



TUDELEY NCF4530-01



NCF4530-02



NCF4530-03

DALLIMORE



SOMERHILL – a large-scale trailing floral is recreated from an archive block-printed chintz fabric, showcasing rhododendron and azalea sprays while preserving the charm of the original document, with clever interpretations of the signature overprints associated with block printing.

Pattern No.	NCF4531-01 to 05	End Use	
Pattern	Somerhill	UK Flamm. Code	C + M
Width cm (ins)	140 (55)	Martindale	18,000
Repeat cm (ins)	128 (50½)	Grade	GD
Content	100% LI	Wing Rip Warp Weft	56N 56N
Care Symbols		Weight GSM	245
Care Code	5	Country of Origin	UK



SOMERHILL NCF4531-01



NCF4531-02



NCF4531-03



NCF4531-04



NCF4531-05

DALLIMORE



SIDNEY STRIPE – reimagined from an archival document, this mid-scale design exudes an Art Deco style. It features a wavy vertical stripe with a printed texture, adorned with embroidered stylised flowers and leaves in contrasting colours.

Pattern No.	NCF4532-01 to 06	End Use	
Pattern	Sidney Stripe	UK Flamm. Code	N/A
Width cm (ins)	130 (51¼)	Martindale	N/A
Repeat cm (ins)	19 (7½)	Grade	N/A
Content	85% LI; 15% VI	Wing Rip Warp Weft	N/A
Care Symbols		Weight GSM	137
Care Code	8	Country of Origin	India



SIDNEY STRIPE NCF4532-01



NCF4532-02



NCF4532-03



NCF4532-04



NCF4532-05



NCF4532-06

DALLIMORE



FERN CRAZE – a contemporary print of stylised fern leaves grouped together in blocks of colour.

Pattern No.	NCF4533-01,02,03	End Use	
Pattern	Fern Craze	UK Flamm. Code	C + M
Width cm (ins)	140 (55)	Martindale	25,000
Repeat cm (ins)	71 (28)	Grade	GD
Content	55% LI; 45% CO	Wing Rip Warp Weft	22N 62N
Care Symbols		Weight GSM	345
Care Code	5	Country of Origin	UK



FERN CRAZE NCF4533-01



NCF4533-02



NCF4533-03

DALLIMORE



BEDGEBURY – a two-colour print design featuring delicate leaves within a leafy trellis makes a great companion to many of Nina's fabrics.

Pattern No.	NCF4534-01 to 06	End Use	
Pattern	Bedgebury	UK Flamm. Code	C + M
Width cm (ins)	140 (55)	Martindale	25,000
Repeat cm (ins)	28 (11)	Grade	GD
Content	55% LI; 45% CO	Wing Rip Warp Weft	22N 62N
Care Symbols		Weight GSM	345
Care Code	5	Country of Origin	UK



BEDGEBURY NCF4534-01



NCF4534-02



NCF4534-03



NCF4534-04



NCF4534-05



NCF4534-06

DALLIMORE



HOLLINGBOURNE – inspired by an archive block-print, floral posies are surrounded by a trellis of leaves. The design presents a variety of flowers, including crocuses, irises, cornflowers, chrysanthemums, foxgloves, clematis, and lavender.

Pattern No.	NCF4535-01 to 04	End Use	
Pattern	Hollingbourne	UK Flamm. Code	C + M
Width cm (ins)	140 (55)	Martindale	25,000
Repeat cm (ins)	109 (43)	Grade	GD
Content	55% LI; 45% CO	Wing Rip Warp Weft	22N 62N
Care Symbols		Weight GSM	345
Care Code	5	Country of Origin	UK



HOLLINGBOURNE NCF4535-01



NCF4535-02



NCF4535-03



NCF4535-04

DALLIMORE WEAVES

DALLIMORE WEAVES

A collection of colourful upholstery fabrics offers a range of patterns and textures, from zig-zag and chequered weaves to houndstooth and lattice designs. While each design has its unique characteristics, they co-ordinate beautifully with the prints and embroideries in **DALLIMORE** and with many of Nina's decorative collections.

The county of Kent, known as the 'garden of England' provides inspiration for the design names.

DALLIMORE WEAVES



APPLEDORE – a playful zig-zag pattern is presented in colour combinations to form horizontal stripes. The design is inspired by the decorative embroidery found in TUDELEY, from Nina Campbell's DALLIMORE collection.

Pattern No.	NCF4520-01 to 05	End Use	
Pattern	Appledore	UK Flamm. Code	C + M
Width cm (ins)	146 (56)	Martindale	20,000
Repeat cm (ins)	22 (8½)	Grade	GD
Content	55% VI; 33% CO; 12% LI	Wing Rip Warp Weft	99N 90N
Care Symbols		Weight GSM	502
Care Code	5	Country of Origin	Italy



APPLEDORE NCF4520-01



NCF4520-02



NCF4520-03



NCF4520-04



NCF4520-05

DALLIMORE WEAVES



HADLOW – a multi-coloured houndstooth design woven with a twill construction.

Pattern No.	NCF4521-01 to 05	End Use	
Pattern	Hadlow	UK Flamm. Code	C + M
Width cm (ins)	142 (56)	Martindale	25,000
Repeat cm (ins)	35 (13¾)	Grade	GD
Content	54% VI; 20% LI; 20% PL; 6% CO	Wing Rip Warp Weft	160N 180N
Care Symbols		Weight GSM	560
Care Code	5	Country of Origin	Italy



HADLOW NCF4521-01



NCF4521-02



NCF4521-03



NCF4521-04



NCF4521-05

DALLIMORE WEAVES



ATTWOOD – interlacing blocks of colourful stripes create a basketweave design.

Pattern No.	NCF4522-01 to 05	End Use	
Pattern	Attwood	UK Flamm. Code	C + M
Width cm (ins)	144(56¾)	Martindale	20,000
Repeat cm (ins)	7 (2¾)	Grade	GD
Content	40% VI; 25% LI; 20% CO; 15% PL	Wing Rip Warp Weft	180N 260N
Care Symbols		Weight GSM	650
Care Code	5	Country of Origin	Italy



ATTWOOD NCF4522-01



NCF4522-02



NCF4522-03



NCF4522-04



NCF4522-05

DALLIMORE WEAVES

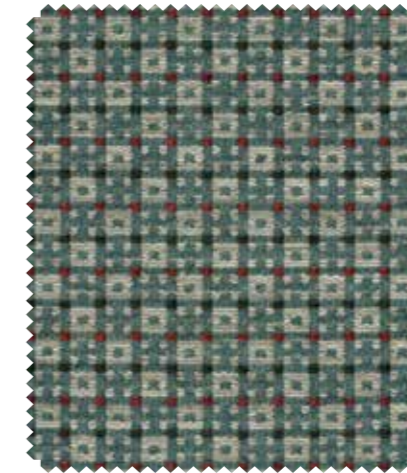


CHIDDINGSTONE – a small-scale chequered weave with contrast-coloured tufted spots.

Pattern No.	NCF4523-01 to 06	End Use	
Pattern	Chiddingstone	UK Flamm. Code	C + M
Width cm (ins)	138 (54½)	Martindale	30,000
Repeat cm (ins)	3.5 (1½)	Grade	GC
Content	32% VI; 30% WO; 22% PL; 16% CO;	Wing Rip Warp Weft	328N 190N
Care Symbols		Weight GSM	734
Care Code	5	Country of Origin	Turkey



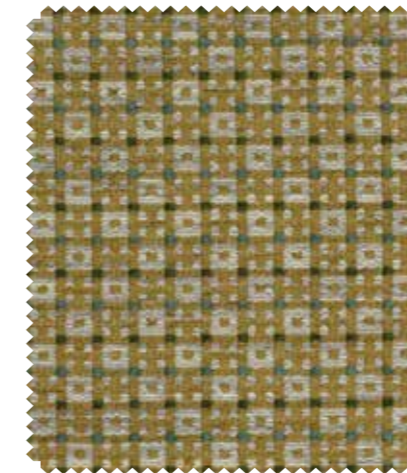
CHIDDINGSTONE NCF4523-01



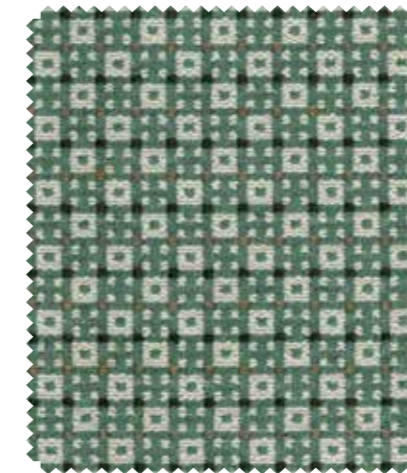
NCF4523-02



NCF4523-03



NCF4523-04



NCF4523-05



NCF4523-06

DALLIMORE WEAVES



MARDEN – reminiscent of a landscape painting, horizontal daubes of colour create a subtle lattice pattern. The fabric has a beautiful soft handle as well as an excellent Martindale abrasion of 70,000.

Pattern No.	NCF4524-01,02,03	End Use	
Pattern	Marden	UK Flamm. Code	C + M + H
Width cm (ins)	134 (52¾)	Martindale	70,000
Repeat cm (ins)	35 (13¾)	Grade	SC
Content	52% WO; 24% CO; 15% PA; 9% PL	Wing Rip Warp Weft	94N 182N
Care Symbols		Weight GSM	620
Care Code	5	Country of Origin	Turkey



MARDEN NCF4524-01



NCF4524-02



NCF4524-03

DALLIMORE WEAVES

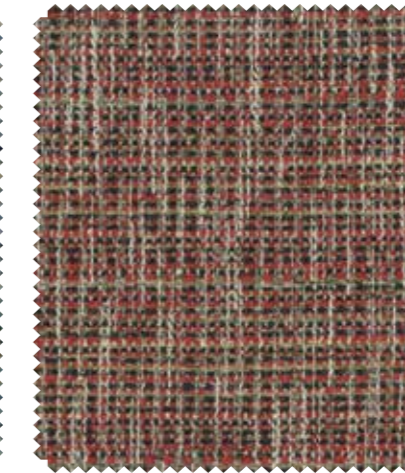


WEALD – a versatile plain weave woven with multi-coloured textured yarns.

Pattern No.	NCF4525-01 to 06	End Use	
Pattern	Weald	UK Flamm. Code	C + M
Width cm (ins)	140 (55)	Martindale	35,000
Repeat cm (ins)	- (-)	Grade	GC
Content	40% VI; 35% CO; 10% LI; 10% PC; 5% PL	Wing Rip Warp Weft	340N 120N
Care Symbols		Weight GSM	664
Care Code	5	Country of Origin	Turkey



WEALD NCF4525-01



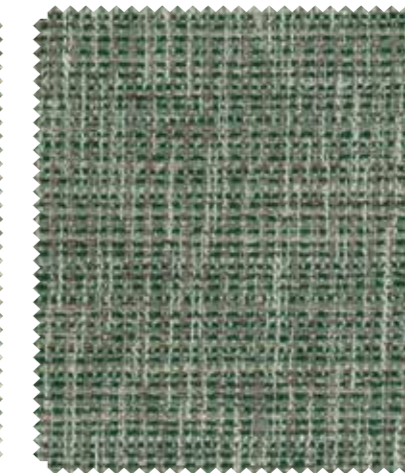
NCF4525-02



NCF4525-03



NCF4525-04



NCF4525-05



NCF4525-06

TECHNICAL SPECIFICATIONS

COMPOSITION CODES

CL	CELLULOSE
CO	COTTON
CP	POLYCOTTON
CU	CUPRO
EA	ELASTINE
FR-PL	POLYESTER
GL	GLASS
HA	HEMP
JU	JUTE
LI	LINEN
MA	MODACRYLIC
ME	METAL
OC	ORGANIC COTTON
PA	NYLON/POLYAMIDE
PC	ACRYLIC
PE	PEARL
PL	POLYESTER
PM	METALLICIZED POLYESTER
PO	POLYOLEFIN
PP	POLYPROPYLENE
PS	PLASTIC
PU	POLYURETHANE
PVC	POLYVINYL CHLORIDE
rCO	RECYCLED COTTON
rPET	RECYCLED POLYETHYLENE
SE	SILK
SH	SHELL
TR	TREVIRA CS
VI	VISCOSE/RAYON
WD	WOOD
WL	LLAMA WOOL
WM	MOHAIR WOOL
WO	WOOL
WP	ALPACA WOOL
WV	VIRGIN WOOL

FLAMMABILITY CODES

A	Resistant to smouldering cigarette tested over standard foam
B	Resistant to smouldering cigarette tested over standard foam plus 2 1/2 oz polyester wrap
C	Resistant to smouldering cigarette tested over low density CMHR foam
D	Resistant to smouldering cigarette tested over high density CMHR foam 35kg M³
G	Schedule 3 interliner resistant to ignition Source 5 tested over standard foam
H	Match resistant
L	Trimmings exempt from regulation
M	Must be used with a schedule 3 (Source 5) interliner
N/A	Not yet tested. Refer to us if required for use in domestic upholstery
V	Meets BS5867: Part 2 Type B (Curtain and Drapes)
X	Meets BS5852: Part 2 Source 5 (CRIB 5) over CMHR foam
Z	Not to be used for domestic upholstery in the UK unless suitable for treatment

FABRIC CARE SYMBOLS

	Do not use chlorine or bleach
	Chlorine or bleach may be used
	Professional dry clean – P process
	Do not dry clean
	Max temperature of wash 30°C
	Max temperature of wash 40°C – Medium wash / short spin
	Hand wash only
	Do not wash
	Maximum temperature 110°C-cool
	Maximum temperature 150°C-warm
	Maximum temperature 200°C-hot
	Do not iron
	Do not use steam
	Do not tumble dry
	Tumble dry

RECOMMENDED FABRIC USAGE CODES

	curtains / rideaux / Gardinen / tende / cortinas
	loose upholstery / housses de sièges / Hussen / sfoderabile / tapicería en funda
	tight upholstery / sièges / Polsterung / imbottiti / tapicería
	contract / hôtellerie / Objekt geeignet / uso alberghiero / proyectos

UPHOLSTERY GRADE CODES

GD	General Domestic
HD	Heavy Domestic
SD	Severe Domestic
SC	Severe Contract

MARTINDALE ABRASION

Plain and patterned fabrics suitable for upholstery with a Martindale abrasion of 40,000 or greater are:

DALLIMORE WEAVES

DESIGN NAME	CODE	MARTINDALE ABRASION	WING RIP NEWTONS WARP & WEFT
Marden	NCF4524-01,02,03	70,000	94N 182N



